



VES
ICEBOX
12 / 24 / 48 Volts DC



We took some of the components from the HD series and split them into smaller individual components for tight spaces. The VES ICEBOX can accept almost all upgrades that are available to the HD series. The VES ICEBOX is perfect for vans, RV's, heavy duty construction equipment, or wherever you need additional cooling. Don't have a big enough alternator charging system? Add some batteries and a battery charger to make the system isolated from the engine's charge circuit. Available in 12/24 or 48 Volts DC.

FEATURES:

- SMALL SPACE SAVING DESIGN
- EVAPORATOR BRACKETS CAN BE LOCATED ON THE TOP OR BOTTOM OF THE ENCLOSURE FOR CEILING OR CABINET MOUNTING.
- DEEP EVAPORATOR CONDENSATION TRAY IS PERFECT FOR OFF ROAD OR HEAVY EQUIPMENT
- 360 DEGREE IP68 RATED 4" ROTATABLE BLOWER
- COMPRESSOR CAN BE HIDDEN AWAY FROM VIEW
- LOW POWER CONSUMPTION USING OUR ALWAYS ACTIVE ECO MODE VARIABLE COMPRESSOR SPEED TECHNOLOGY

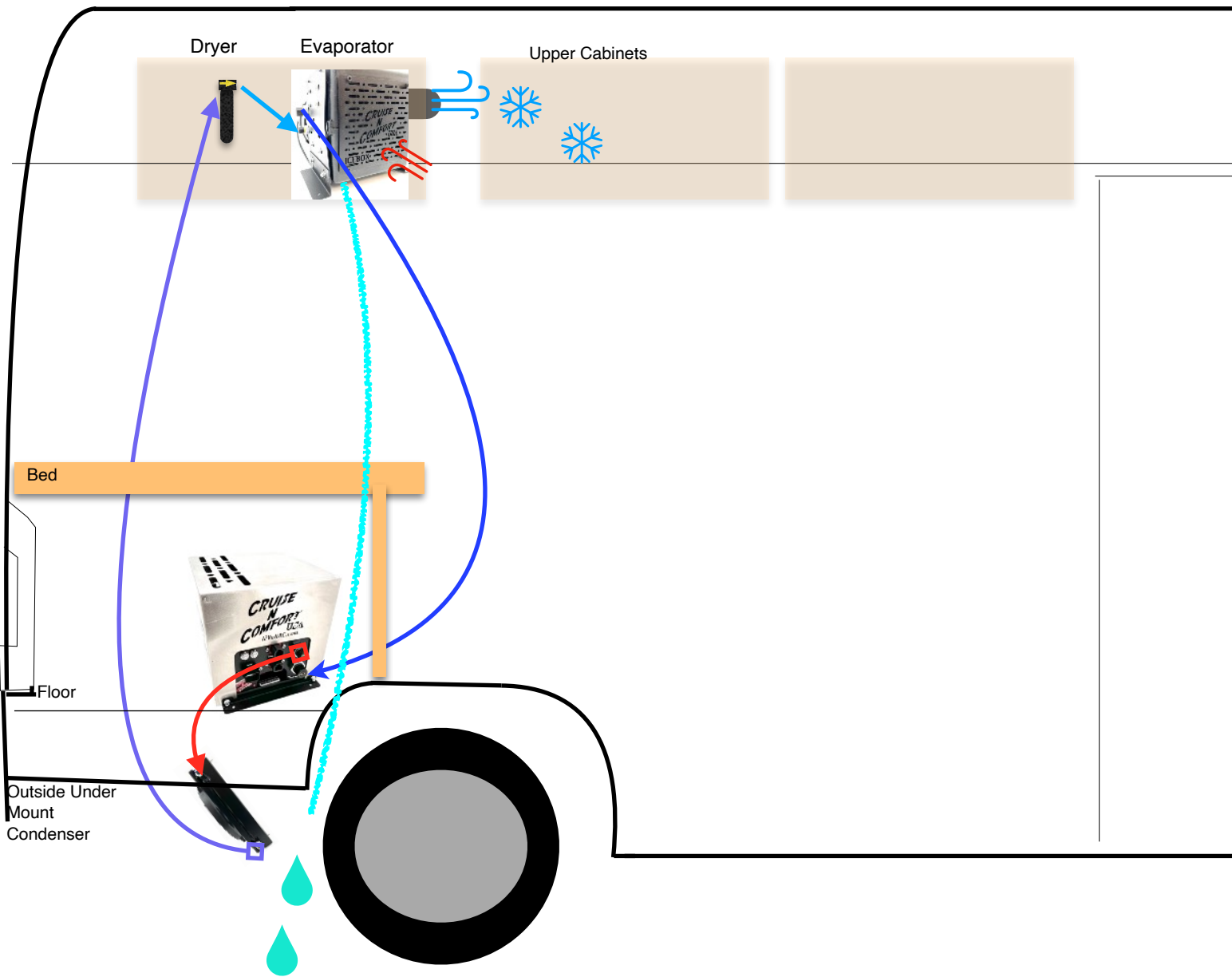
SPECIFICATIONS:

OPERATING VOLTAGE	CURRENT CONSUMPTION	COOLING CAPACITY
12L- 10-15 VDC	12L- 38-55 AMPS*	12L- 10K BTU
24L- 20-31 VDC	24L- 20-33 AMPS*	24L- 11.5K BTU
48L- 40-62 VDC	48L- 8-16 AMPS*	48L- 12K BTU

The above numbers are based on the baseline compressor that we set as the unit is being built. The baseline speed can be adjusted up or down for less or more current draw and cooling capacity. The Eco Cruise feature that adjusts the compressor speed will still remain active in units other than the VES Classic. Compressors have a soft start built into them when they initially start.

*Current ratings are nominal. Current ratings can fluctuate depending on accessories and or operating conditions
All specifications and features are subject to change without notice.

VES
ICEBOX
 Evaporator Upper Cabinets



Condensation drain line 3/8" I.D. drains to outside



4" Vent Ducting/Tubing (For best results do not reduce in size or have single runs longer than 4 feet each)



A/C Hose 1 Compressor Box To Under Mount Condenser



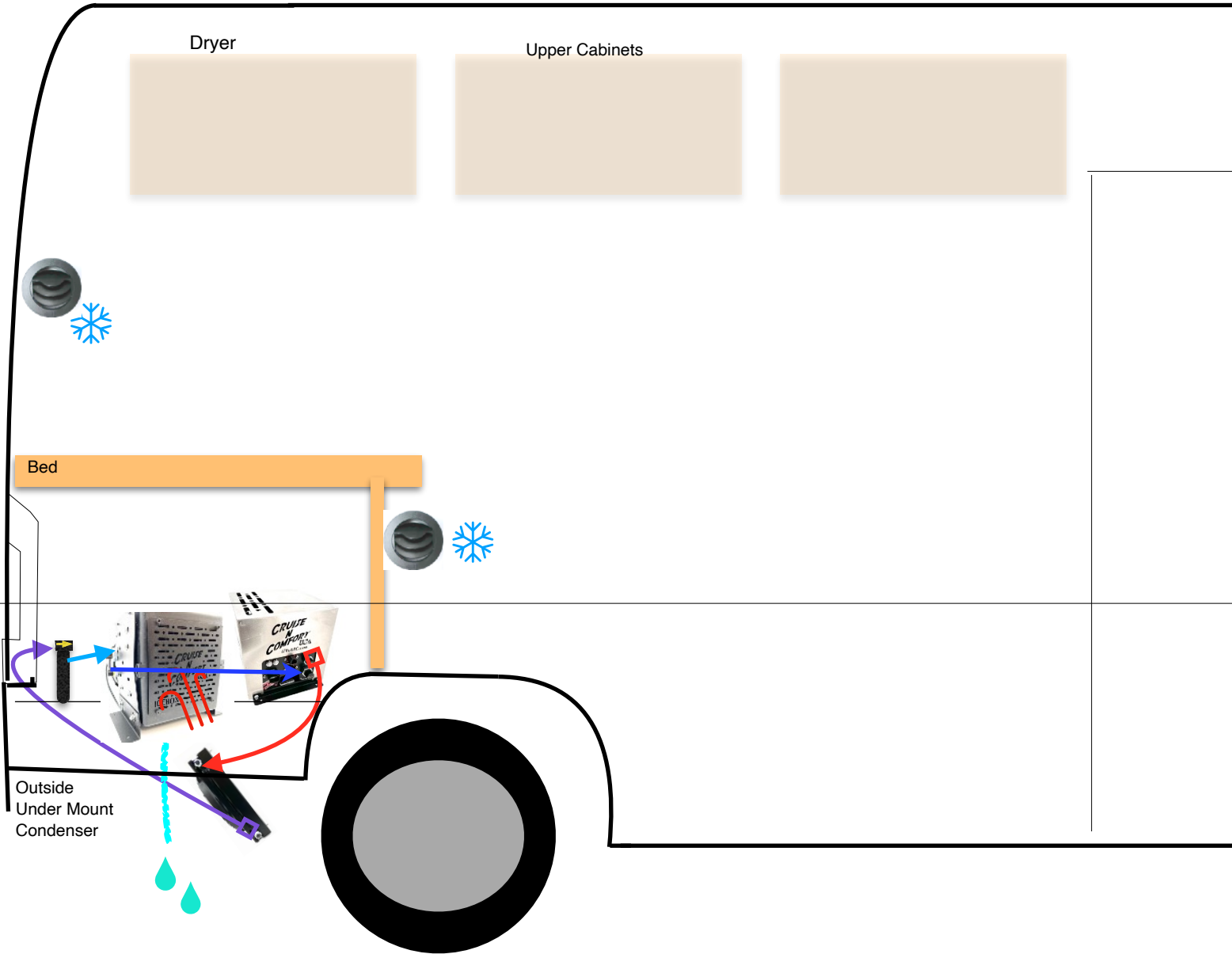
A/C Hose 2 Condenser To Receiver Dryer



A/C Hose 3 Receiver Dryer To Evaporator

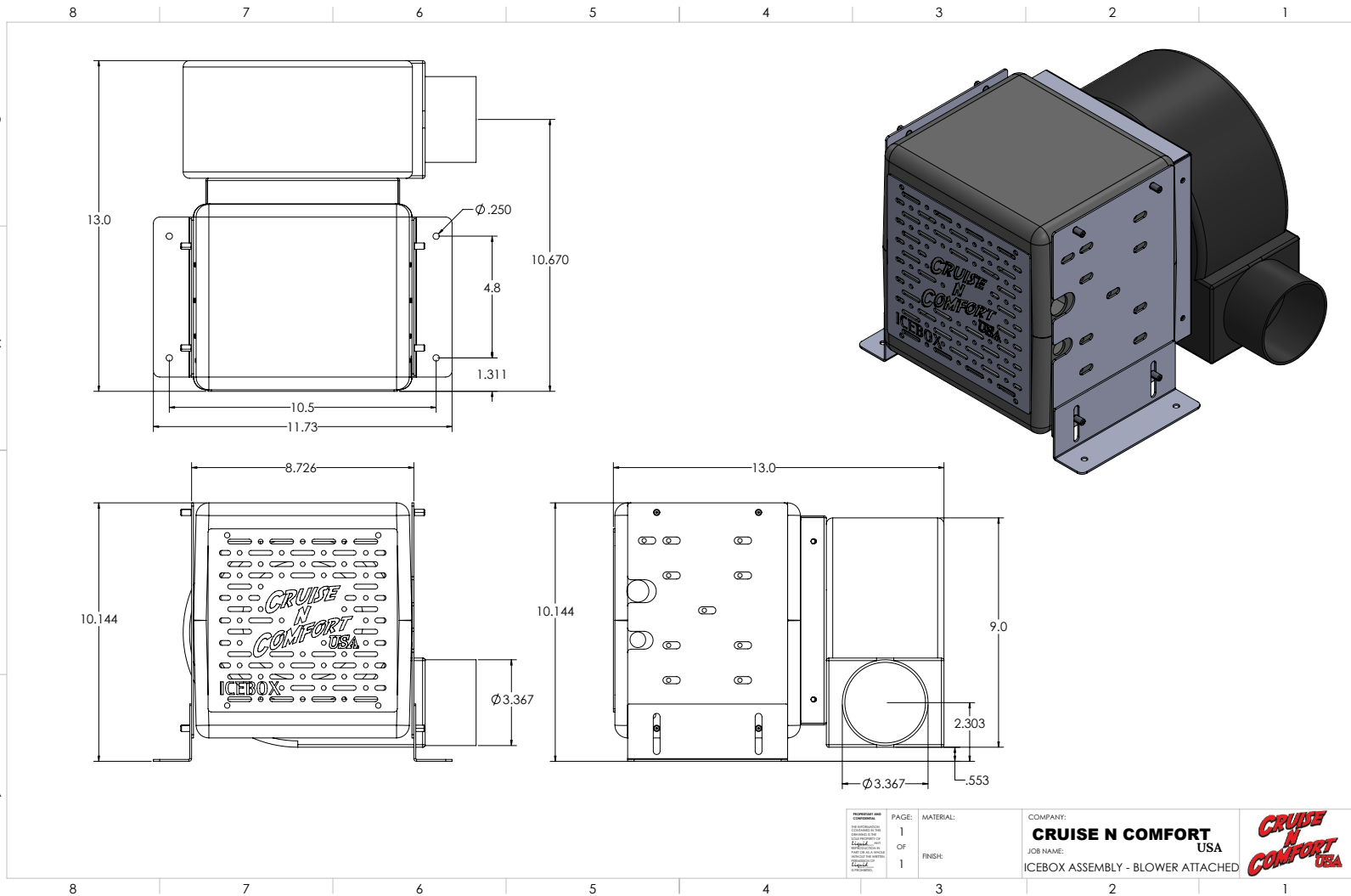


A/C Hose 4 Evaporator to Compressor * note this line and fittings should be insulated with foam tubing to minimize sweating in high humidity environments. Also a condensation pan or wrapping the blower with foam tape is recommended for high humidity environments because the ICEBOX evaporator / blower could condense water on the outside surface.



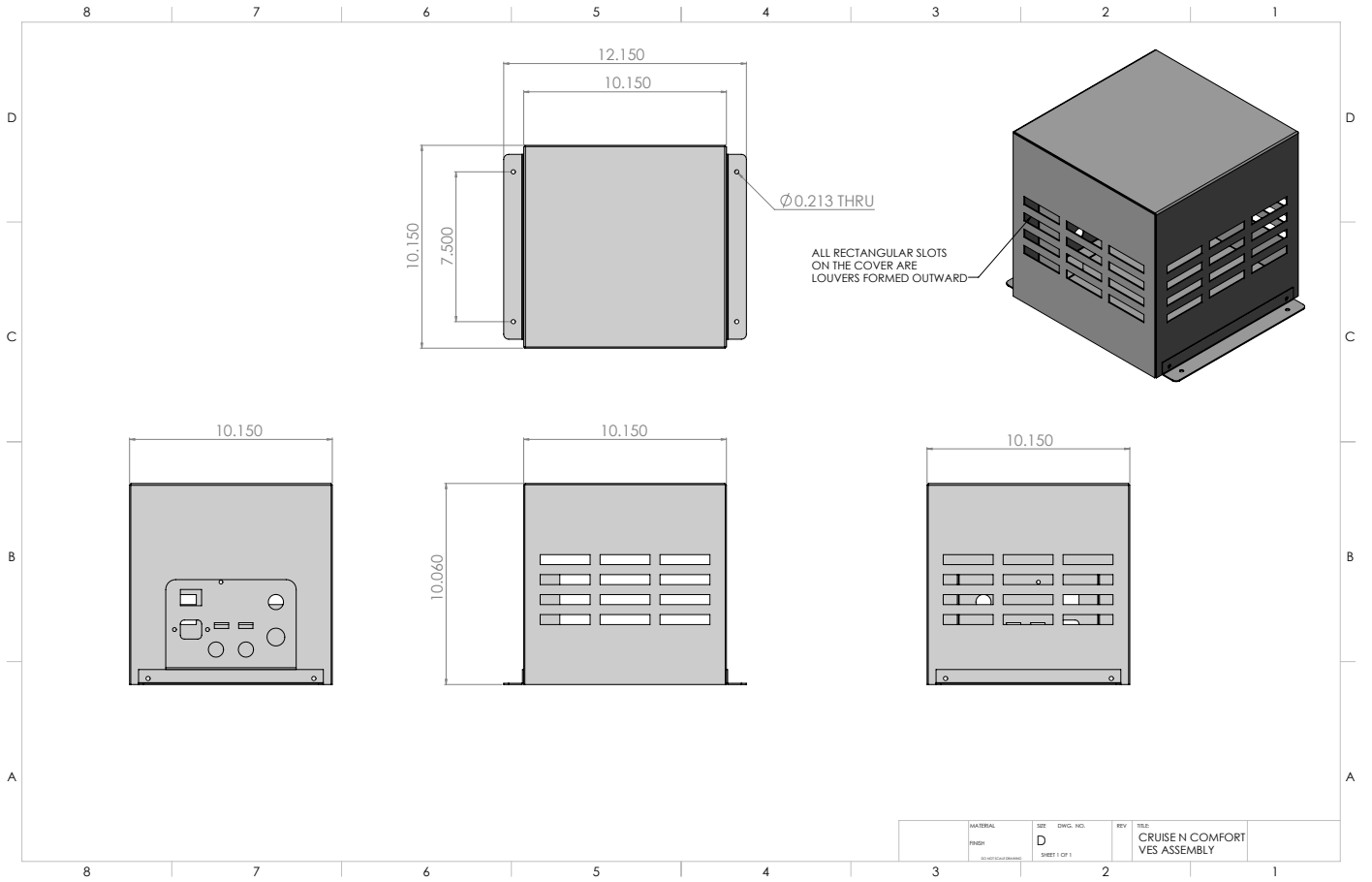
- Condensation drain line 3/8" I.D. drains to outside
- 4" Vent Ducting/Tubing (For best results do not reduce in size or have single runs longer than 4 feet each)
- A/C Hose 1 Compressor Box To Under Mount Condenser
- A/C Hose 2 Condenser To Receiver Dryer
- A/C Hose 3 Receiver Dryer To Evaporator
- A/C Hose 4 Evaporator to Compressor *note this line and fittings should be insulated with foam tubing to minimize sweating in high humidity environments. Also a condensation pan or wrapping the blower with foam tape is recommended for high humidity environments because the ICEBOX evaporator / blower could condense water on the outside surface.

VES
ICEBOX
 Evaporator Assembly



WEIGHT:
 18.1 LBS.

VES
ICEBOX
 Compressor Assembly



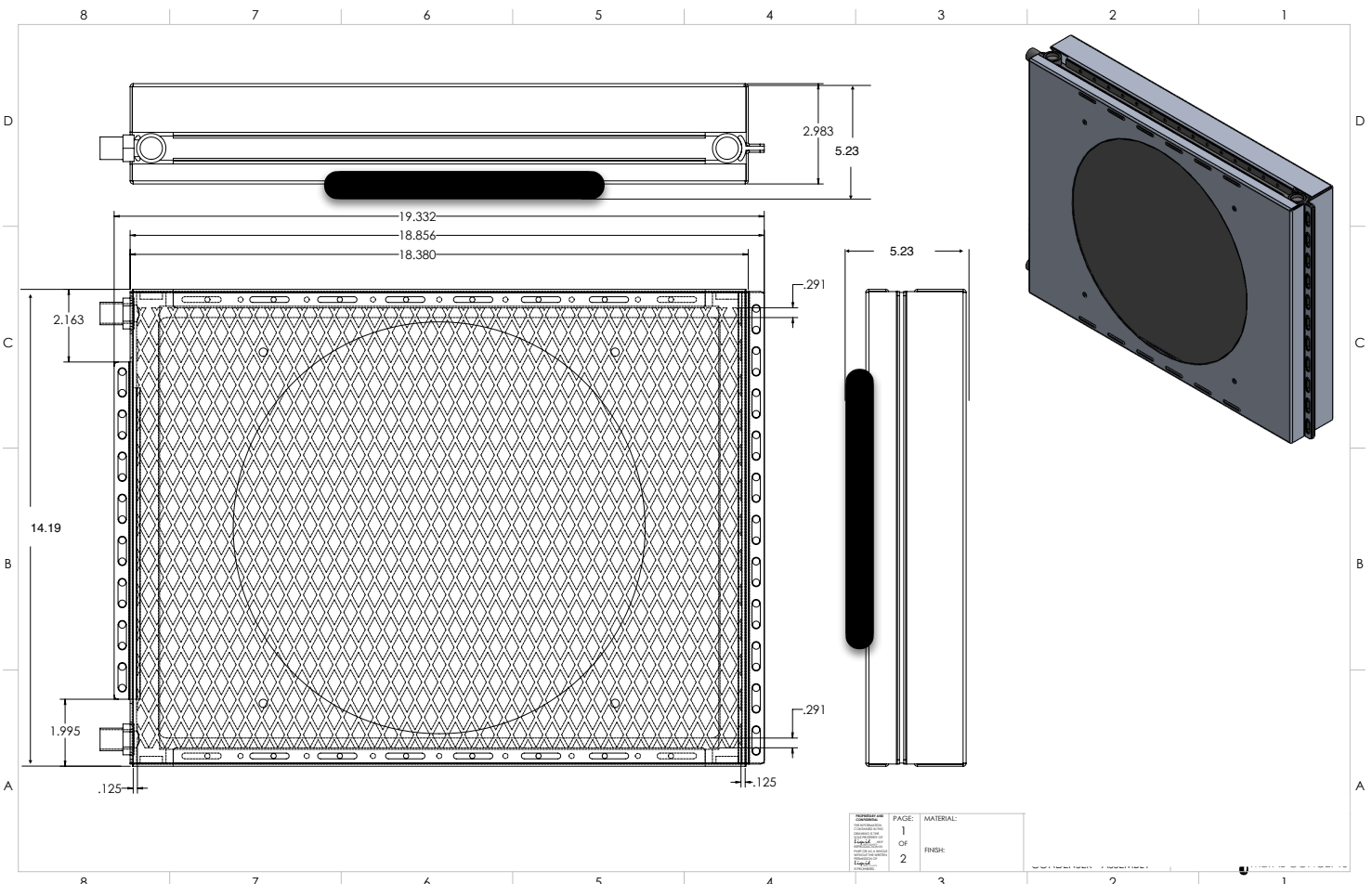
WEIGHT:
 30.5 LBS.

Single Fan Condenser

- Automotive grade powder coated aluminum construction.
- Efficient parallel flow technology
- High flow IP 68 rated water and dust resistant performance fans

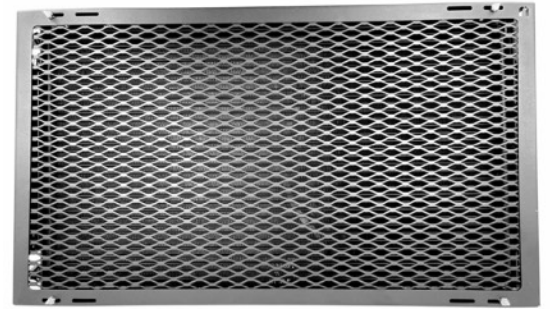


Optional Rock Guard

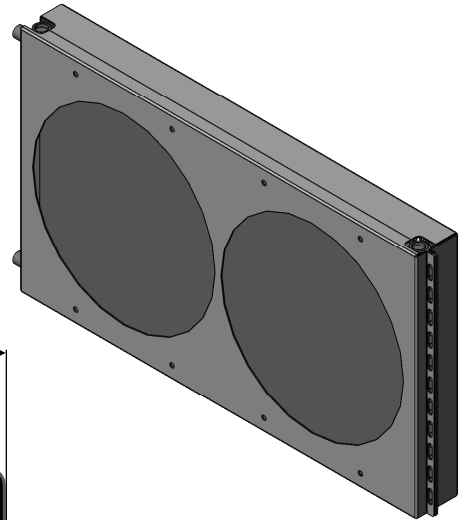
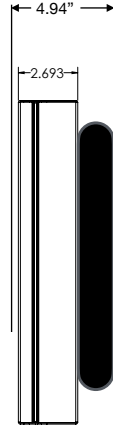
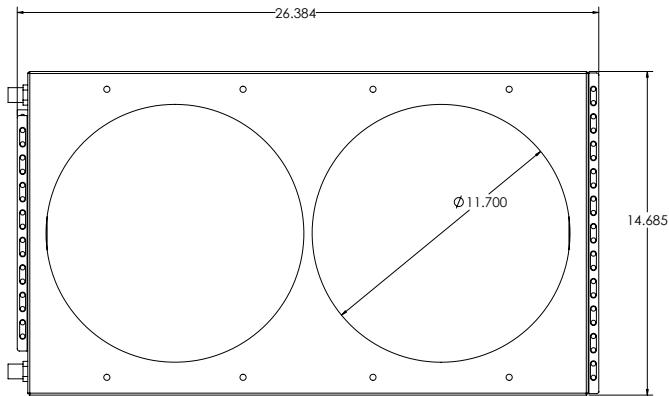
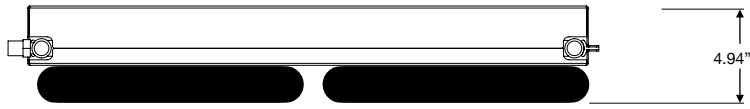


WEIGHT:
 SINGLE FAN CONDENSER 7.8LBS.
 SINGLE FAN ROCK GUARD 1.6 LBS.

Optional Dual Fan Condenser



Optional Rock Guard Shown



WEIGHT:
DUAL FAN CONDENSER 11.7 LBS.
DUAL FAN ROCK GUARD 2.1 LBS.

Universal Condenser Mounting Brackets

These mounting brackets are made of heavy Stainless Steel and include all stainless hardware. These brackets are universal and give you the ability to mount the condenser under, on top, or on the back of the vehicle. The brackets are completely adjustable.

Weight: 3.1 LBS

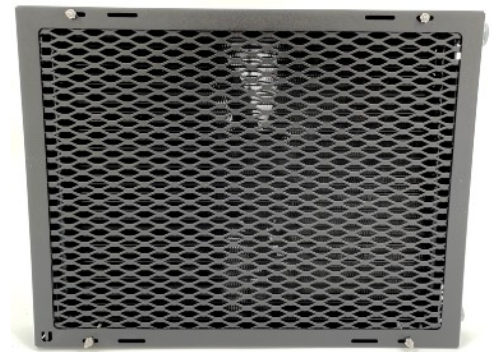


*optional rock guard shown



Condenser Rock Guard:

The CNC Rock Guard is designed to help protect our condensers from rocks and debris. This option is available for all of our condensers and come installed on the condenser when purchased at the time the condenser and main unit are ordered new. If you previously purchased a condenser from us it will fit, but we will need an email from you with the size of your condenser (single fan or dual fan). The unit is flat black powder-coated aluminum and resists salt and corrosion. Available for all of our condensers.



WiFi Thermostat Options

Unlike competitor's WiFi thermostats, which either require a cellular chip activated by a specific carrier or only offer direct WiFi connection to a cell phone like Bluetooth, our WiFi thermostats broadcast over the internet when connected to a 2.4 GHz network of your choice. These connections can be established through a cellular phone from almost any carrier, a tablet, a WiFi hotspot, or even Starlink satellite WiFi. You can leave the internet device in the vehicle, allowing the thermostat to maintain an internet connection. This enables you to connect to, view, and control your vehicle's temperature, and turn the unit on or off from anywhere using the app.

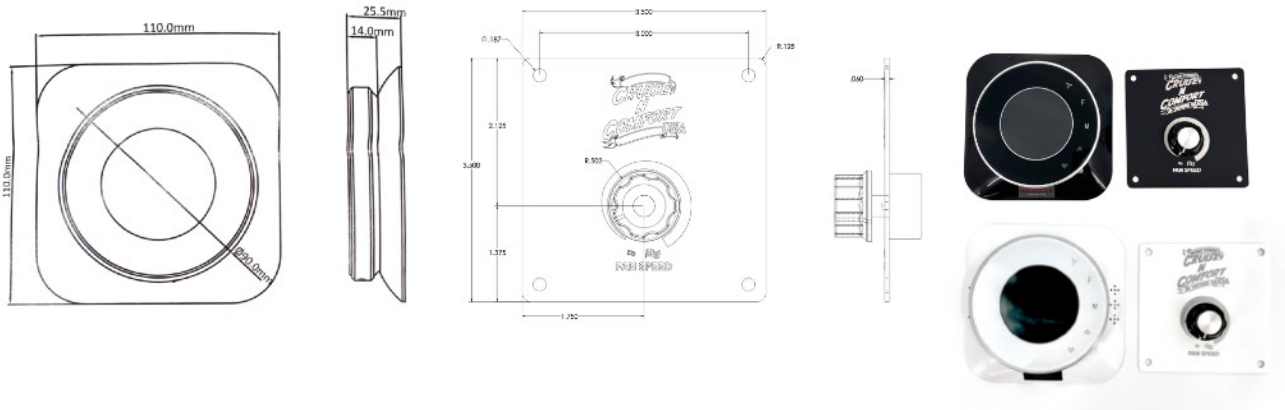
DT-04 WiFi App Enabled Thermostat:

Our new thermostat is app enabled with a customer supplied WiFi connection and is prewired for our systems. Includes a PWM potentiometer with mounting plate for efficient blower control. Thermostat also has a heat function that can trigger a heating device (24 volt DC Relay required).

Available Colors: White (-W) or Black (-B)



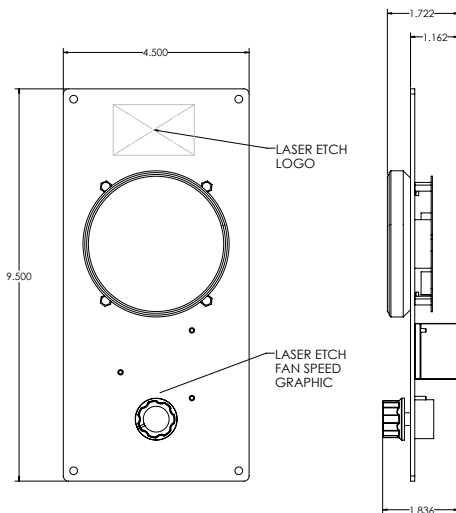
*Wifi app compatible with internet hot spots and routers that can transmit 2.4 ghz.



Thermostat Mounting Plate for DT-04-TP:

The DT-04-TP is an easy solution for mounting our DT-04 thermostats. We machine these brackets, powder-coat them and assemble them with our DT-04 thermostat.

Available Colors: White (-W) or Black (-B)

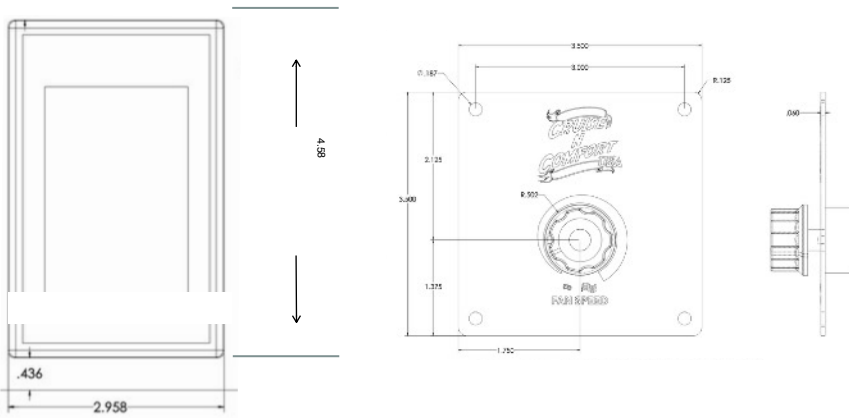


DT-05 WiFi App Enabled Thermostat:

Our new thermostat is app enabled with a customer supplied WiFi connection and is prewired for our systems. Includes a PWM potentiometer with mounting plate for efficient blower control. Thermostat also has a heat function that can trigger a heating device (24 volt DC Relay required). Available Colors: White (-W) or Black (-B)

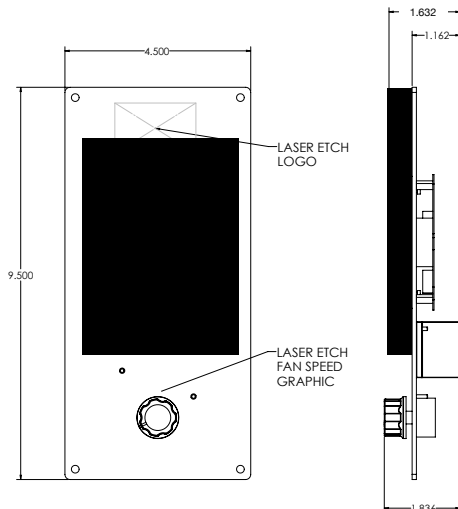


*Wifi app compatible with internet hot spots and routers that can transmit 2.4 ghz.



Thermostat Mounting Plate for DT-05-TP:

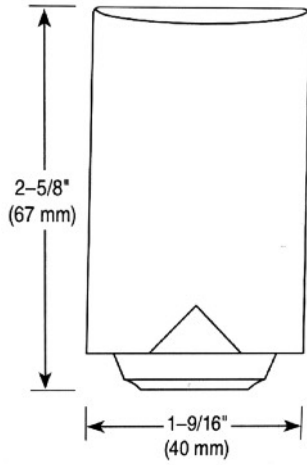
The DT-05-TP is an easy solution for mounting our DT-05 thermostats. We machine these brackets, powder-coat them and assemble them with our DT-05 thermostat. Available Colors: White (-W) or Black (-B)



Optional Sensors for DT-05:

DT-OS Outdoor wired temperature sensor displays the actual outside temperature to the DT-05 thermostat. *

Cruise N Comfort sticker can be removed

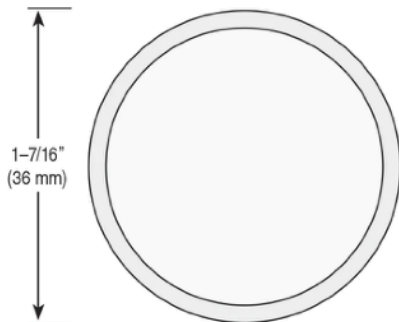


DT-IS Remote wired flush mount indoor sensor allows for temperature sensing in areas away from thermostat. The thermostat can then be set to take readings from the thermostat sensor, remote sensor or average between both.

*Cruise N Comfort sticker can be removed



Front View



Side View

