



Introducing the MES ULTRA: Compact and Powerful Cooling for Tight Spaces

The MES ULTRA is the perfect solution for tight spaces where cooling is essential. We took the best components from our popular MES series and split them into smaller individual units, creating a versatile cooling system that can fit in cabins on sailboats, center console fishing boats, work boats, or anywhere additional cooling is needed.

One of the key features of the MES ULTRA is its compatibility with almost all upgrades available for the MES series. You can easily customize and enhance its performance to meet your specific cooling requirements. Whether you need increased capacity, advanced controls, or specialized features, the MES ULTRA can accommodate your needs with ease.

Built to withstand the rigors of offshore boating, the MES ULTRA is designed for durability and reliability. It is connected using heavy-duty reduced barrier nylon reinforced automotive hose, ensuring a secure and efficient connection. This means you can count on the MES ULTRA to provide optimal cooling performance, even in demanding marine environments.

One of the standout advantages of the MES ULTRA is its true DC power operation. It runs directly on a battery, offering exceptional energy efficiency and eliminating the need for an AC power source. This makes it an ideal cooling solution for boating enthusiasts who want to maximize their battery power and minimize energy consumption.

When you choose the MES ULTRA, you also benefit from our commitment to superior support, parts, and customer service. As these units are proudly assembled right here in Arizona, we have full control over the manufacturing process, ensuring the highest quality standards are met.

Our dedicated team is always ready to assist you with any questions or concerns, ensuring you have a smooth and hassle-free experience. Additionally, we have added WiFi thermostats to our thermostat lineup. With the WiFi thermostat, you can easily control and monitor the cooling system remotely, giving you convenience and peace of mind.

AVAILABLE IN 12/24 OR 48 VOLTS DC, THE MES ULTRA IS THE ULTIMATE COOLING SOLUTION FOR SMALL SPACES ON BOATS. EXPERIENCE THE POWER, EFFICIENCY, AND RELIABILITY OF THE MES ULTRA AND ENJOY COMFORTABLE TEMPERATURES WHEREVER YOUR BOATING ADVENTURES TAKE YOU.

FEATURES:

- BUILT TO WITHSTAND THE RIGORS OF OFF-SHORE BOATING
- FOUR HIGH FLOW 3" SWIVEL VENTS TO DIRECT AIR FLOW
- SMALL SPACE SAVING DESIGN
- EVAPORATOR FRONT CAN BE PAINTED TO MATCH MOST INTERIORS.
- DEEP EVAPORATOR CONDENSATION TRAY IS PERFECT FOR OFF SHORE USE.
- COMPRESSOR CAN BE HIDDEN AWAY FROM VIEW
- LOW POWER CONSUMPTION USING OUR ALWAYS ACTIVE ECO MODE VARIABLE COMPRESSOR SPEED TECHNOLOGY
- VARIABLE DISPLACEMENT COMPRESSOR ADJUSTMENTS GIVE THE INSTALLER THE ABILITY TO REDUCE BTU'S AND CURRENT CONSUMPTION FOR SMALLER ENVIRONMENTS.
- INTERNAL HEAT EXCHANGER AVAILABLE GIVES THE ABILITY TO USE ENGINE COOLANT OR GLYCOL HEATER FOR HEAT. ADDITIONAL COMPONENTS REQUIRED.

SPECIFICATIONS FOR VES ULTRA L

OPERATING VOLTAGE	CURRENT CONSUMPTION	COOLING CAPACITY
12L- 10-15 VDC	12L- 33-49 AMPS*	12L- 8.5K BTU
24L- 20-31 VDC	24L- 22-30 AMPS*	24L- 9.5K BTU
48L- 40-62 VDC	48L- 7-15 AMPS*	48L- 11K BTU

SPECIFICATIONS FOR VES ULTRA s

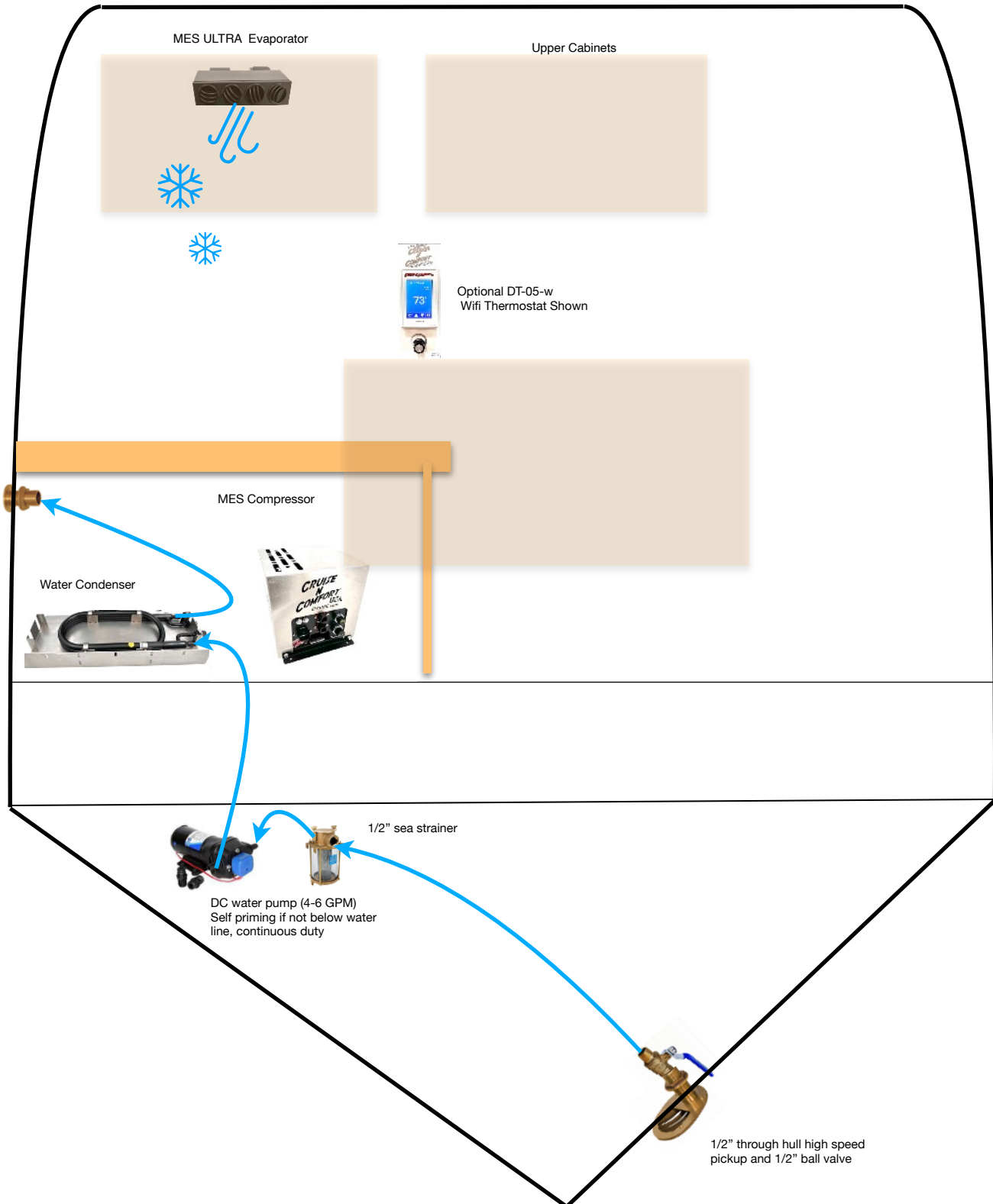
OPERATING VOLTAGE	CURRENT CONSUMPTION	COOLING CAPACITY
12s- 10-15 VDC	12s- 29-32 AMPS*	12s- 6K BTU
24s- 20-31 VDC	24s- 17-24 AMPS*	24s- 9.5K BTU

*Current ratings are nominal. Current ratings can fluctuate depending on accessories and or operating conditions

All specifications and features are subject to change without notice. Power consumption numbers do not include customer supplied water pump.

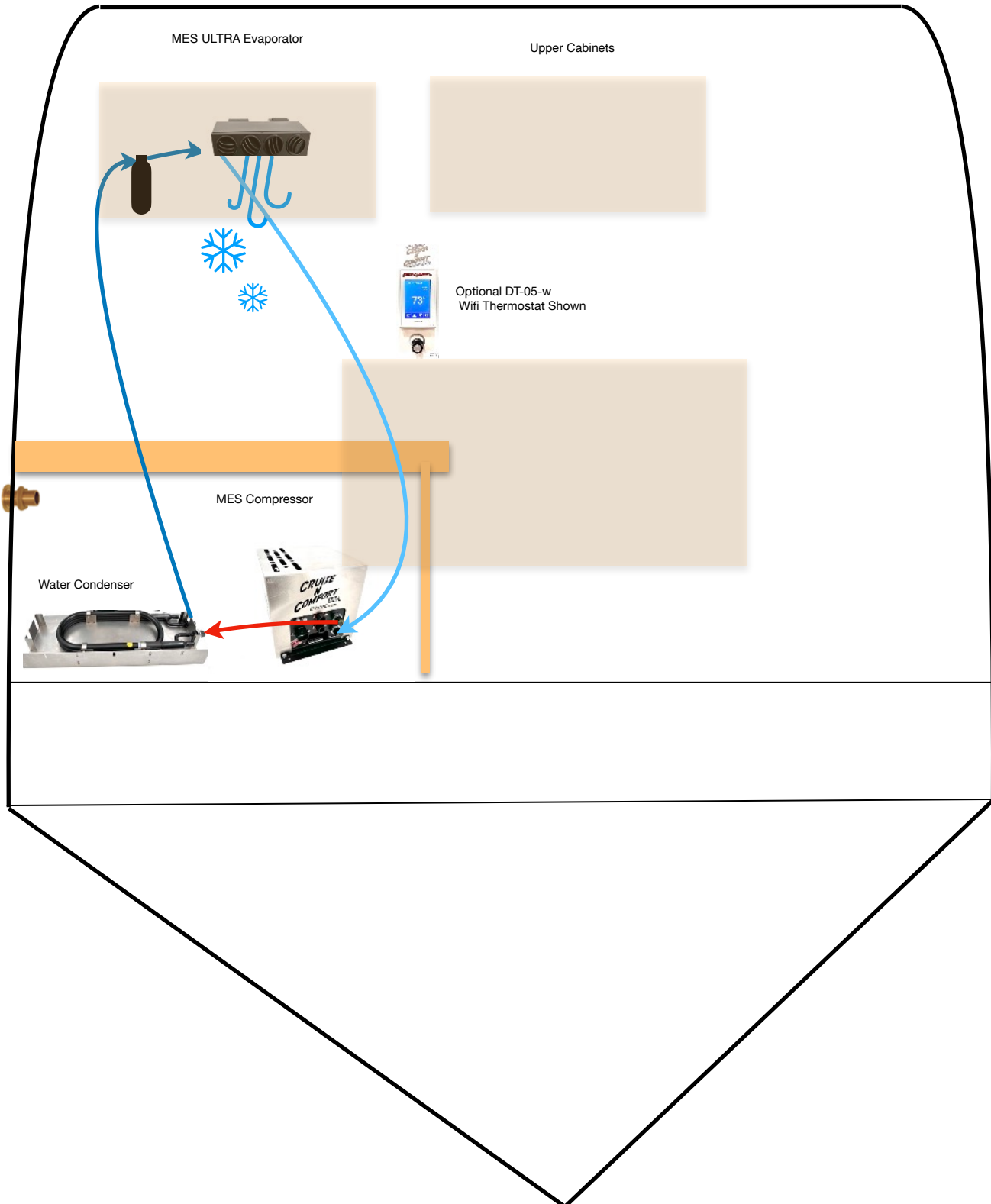
** To use the Wifi features on the Dt-04 and Dt-05 an internet signal must be present within range of the thermostat. Current ratings are tested with 28 feet total refrigerant hose combined. Longer refrigerant lines can alter cooling performance and increase current consumption.

Typical Marine Installation
Water condenser connections

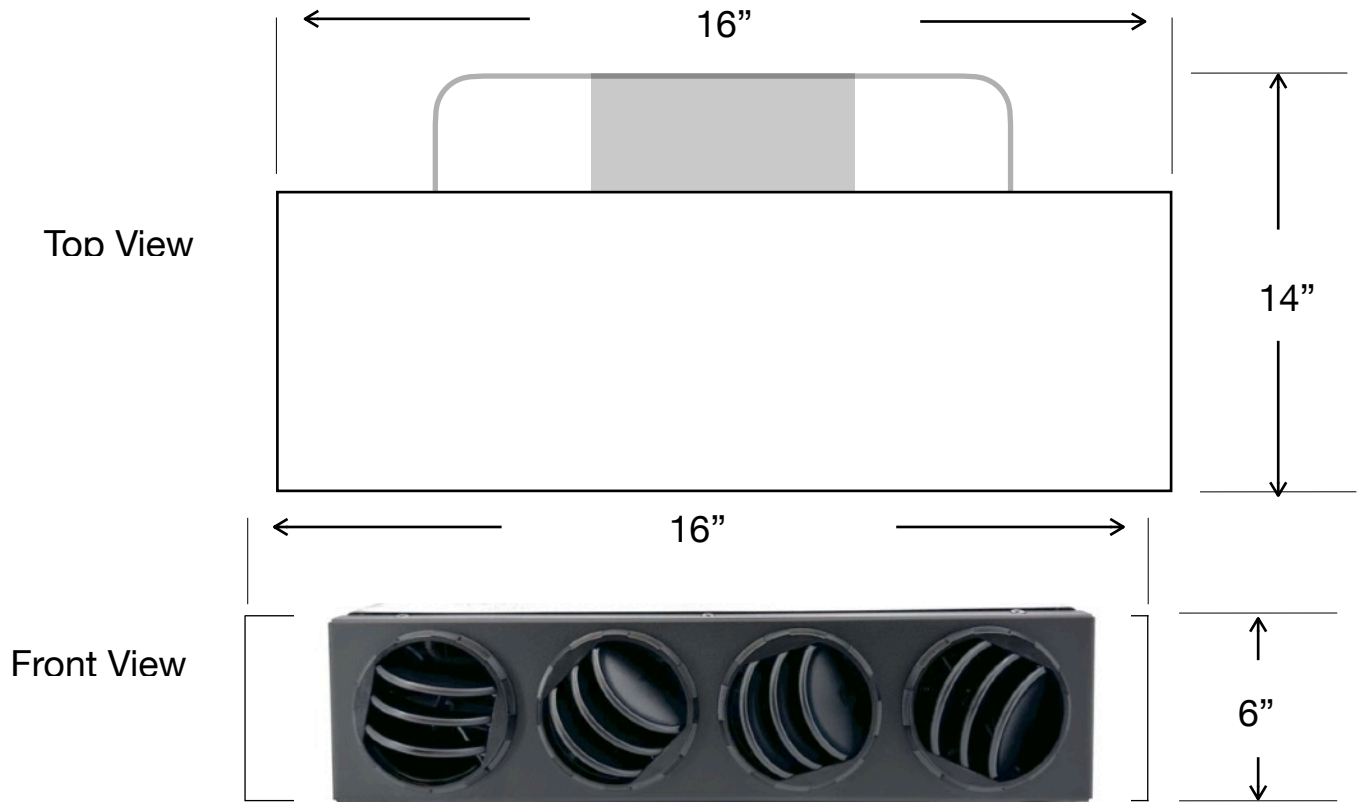


Typical Marine Installation Refrigeration Line Connections

Components are connected with SAE automotive grade flexible refrigeration line. These lines are not included because of various lengths and distances between components. You may submit a custom order for these hoses and we can make them in house or order bulk hose and fittings and crimp them yourself.

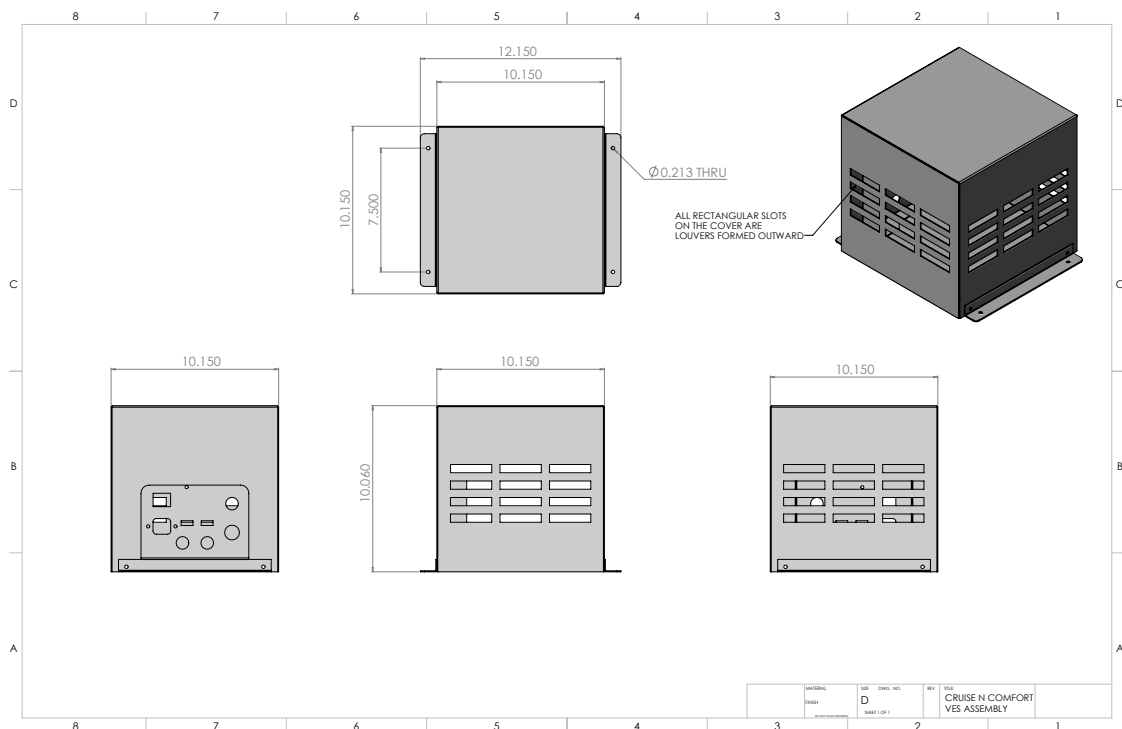


Ultra Evaporator



Weight:
8.2 Lbs

Compressor Assembly

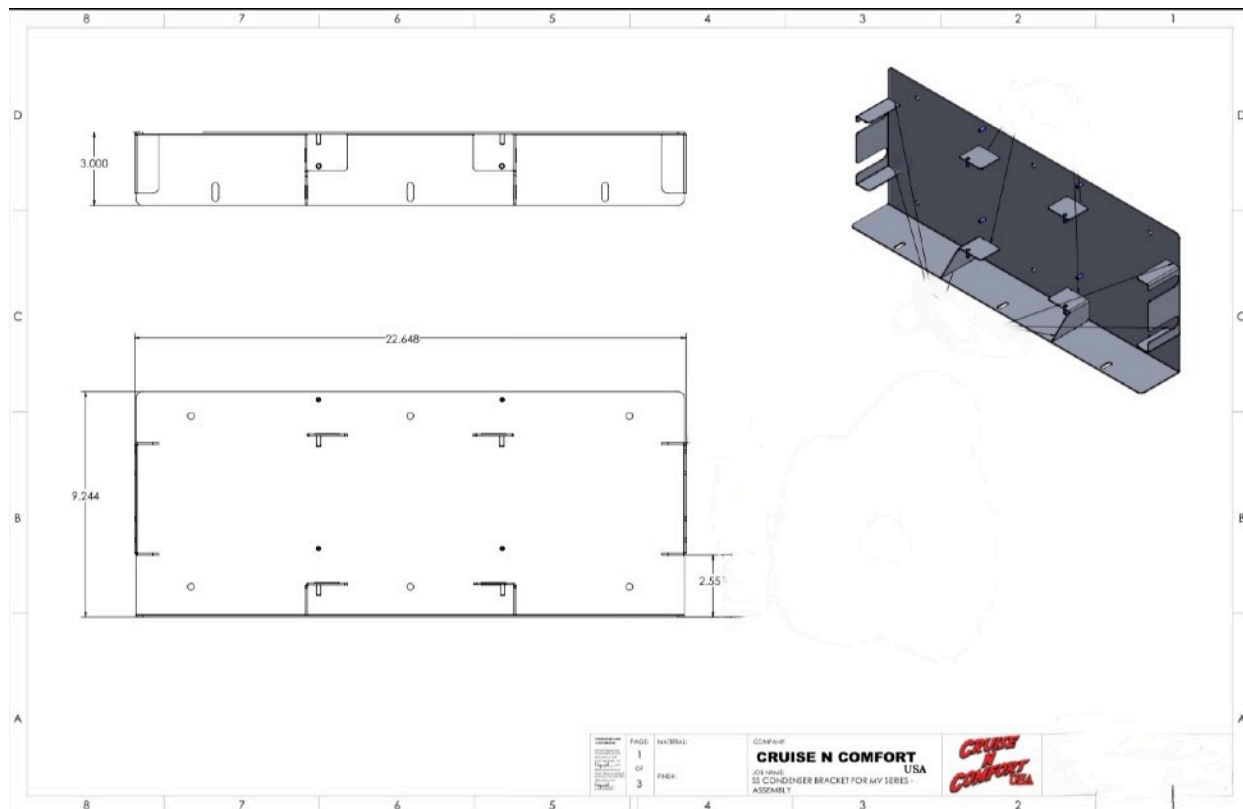
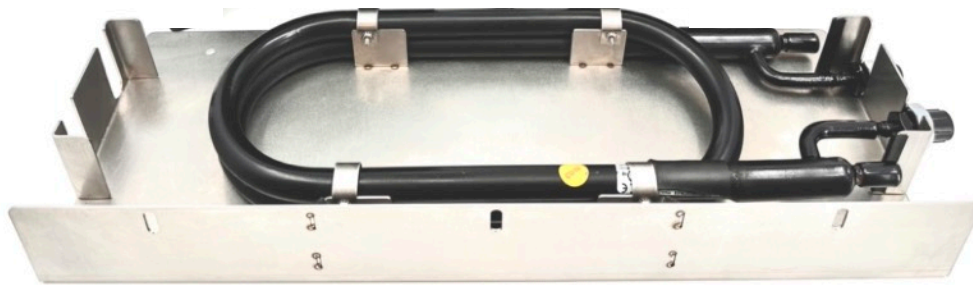


WEIGHT:
30.5

REVISED	DATE	BY	CHKD	INCL	REV	TITLE
D						CRUISE N COMFORT VES ASSEMBLY
1						

Cupro Nickel Condenser

- Highly efficient Cupronickel condensing coil with coaxial "tube-in-tube" design...Made in the USA
- #6 and #8 brass refrigerant fittings accept Female Insert O-Ring SAE Automotive Fittings
- 1/2" Flared Water Fittings
- 4 GPM minimum water pump required

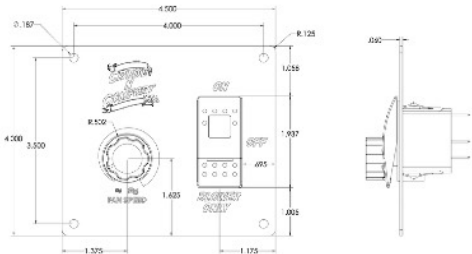




Control Options for all models except MAXX and Classic

Manual Control

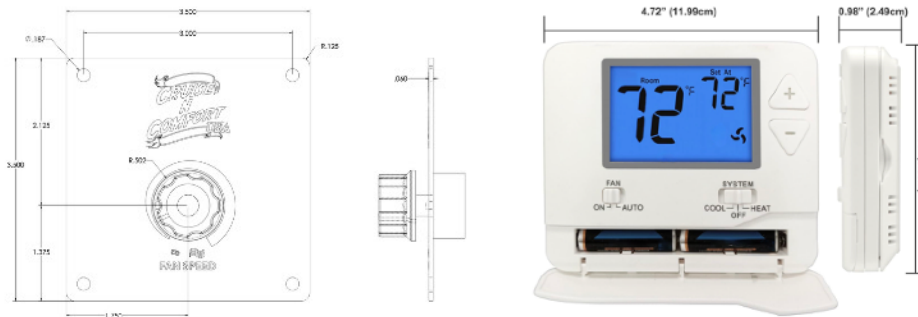
The Manual Control allows for on/ off / blower only control of our units. It can be panel mounted on the wall or dash of a vehicle. The panel also includes a potentiometer to control the PWM module blower speed controller.



Thermostat Options

DT-07 Thermostat:

The DT-07 is a basic digital thermostat that will turn the unit off at the temperature set point. Includes two PWM potentiometer with mounting plate for efficient control. Thermostat also has a heat function that can trigger a heating device (24 volt DC Relay required). Available Colors: White (-W) or Black (-B)



WiFi Thermostat Options

Unlike competitor's WiFi thermostats, which either require a cellular chip activated by a specific carrier or only offer direct WiFi connection to a cell phone like Bluetooth, our WiFi thermostats broadcast over the internet when connected to a 2.4 GHz network of your choice. These connections can be established through a cellular phone from almost any carrier, a tablet, a WiFi hotspot, or even Starlink satellite WiFi. You can leave the internet device in the vehicle, allowing the thermostat to maintain an internet connection. This enables you to connect to, view, and control your vehicle's temperature, and turn the unit on or off from anywhere using the app.

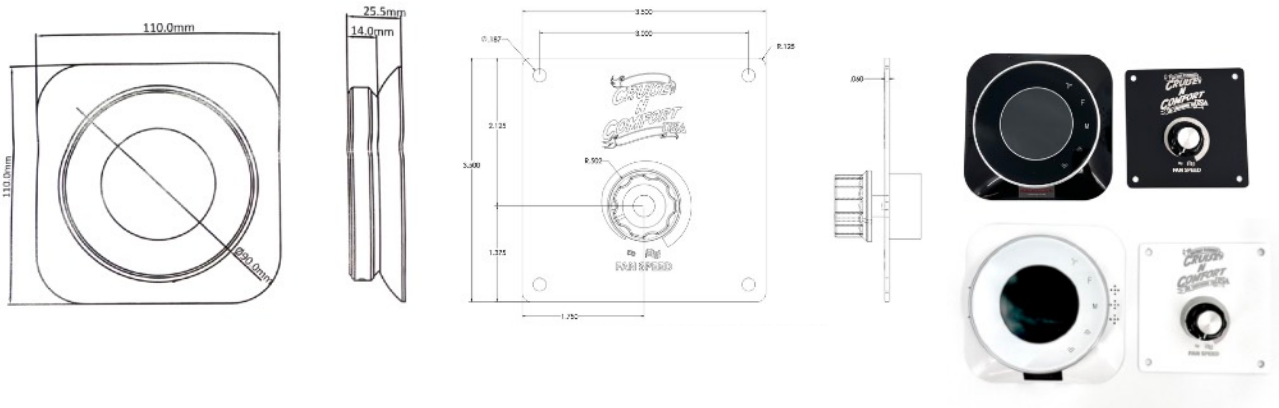
DT-04 WiFi App Enabled Thermostat:

Our new thermostat is app enabled with a customer supplied WiFi connection and is prewired for our systems. Includes a PWM potentiometer with mounting plate for efficient blower control. Thermostat also has a heat function that can trigger a heating device (24 volt DC Relay required).

Available Colors: White (-W) or Black (-B)



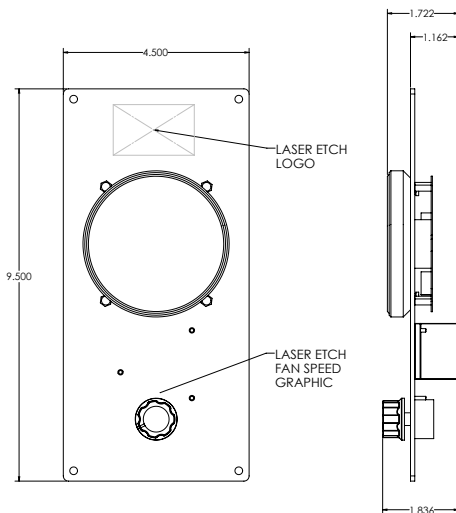
*Wifi app compatible with internet hot spots and routers that can transmit 2.4 ghz.



Thermostat Mounting Plate for DT-04-TP:

The DT-04-TP is an easy solution for mounting our DT-04 thermostats. We machine these brackets, powder-coat them and assemble them with our DT-04 thermostat.

Available Colors: White (-W) or Black (-B)

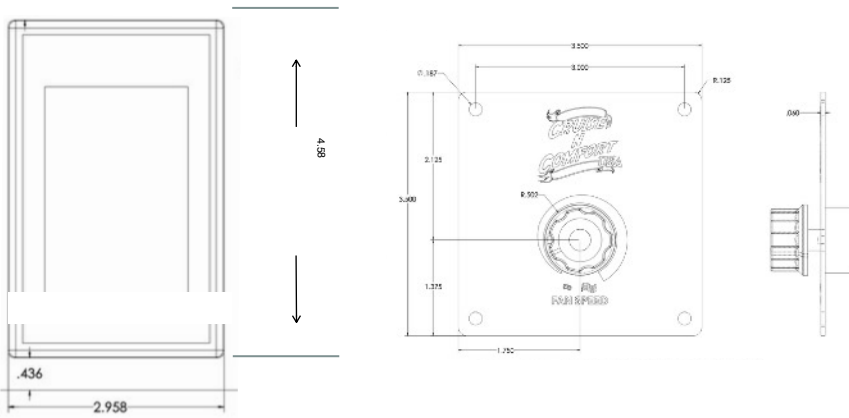


DT-05 WiFi App Enabled Thermostat:

Our new thermostat is app enabled with a customer supplied WiFi connection and is prewired for our systems. Includes a PWM potentiometer with mounting plate for efficient blower control. Thermostat also has a heat function that can trigger a heating device (24 volt DC Relay required). Available Colors: White (-W) or Black (-B)

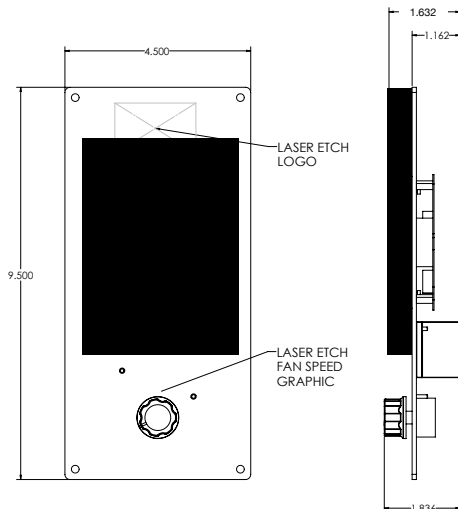


*Wifi app compatible with internet hot spots and routers that can transmit 2.4 ghz.



Thermostat Mounting Plate for DT-05-TP:

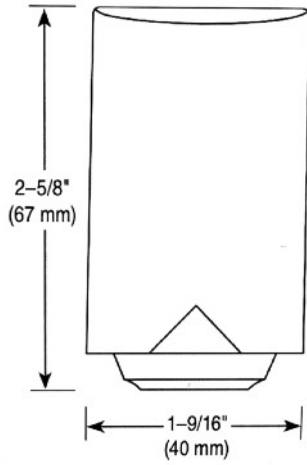
The DT-05-TP is an easy solution for mounting our DT-05 thermostats. We machine these brackets, powder-coat them and assemble them with our DT-05 thermostat. Available Colors: White (-W) or Black (-B)



Optional Sensors for DT-05:

DT-OS Outdoor wired temperature sensor displays the actual outside temperature to the DT-05 thermostat. *

Cruise N Comfort sticker can be removed

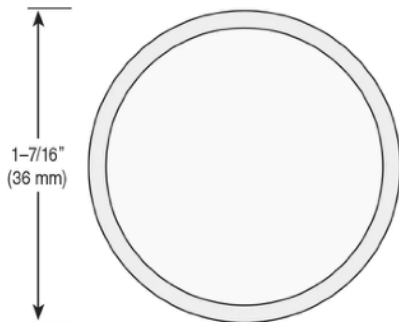


DT-IS Remote wired flush mount indoor sensor allows for temperature sensing in areas away from thermostat. The thermostat can then be set to take readings from the thermostat sensor, remote sensor or average between both.

*Cruise N Comfort sticker can be removed



Front View



Side View

