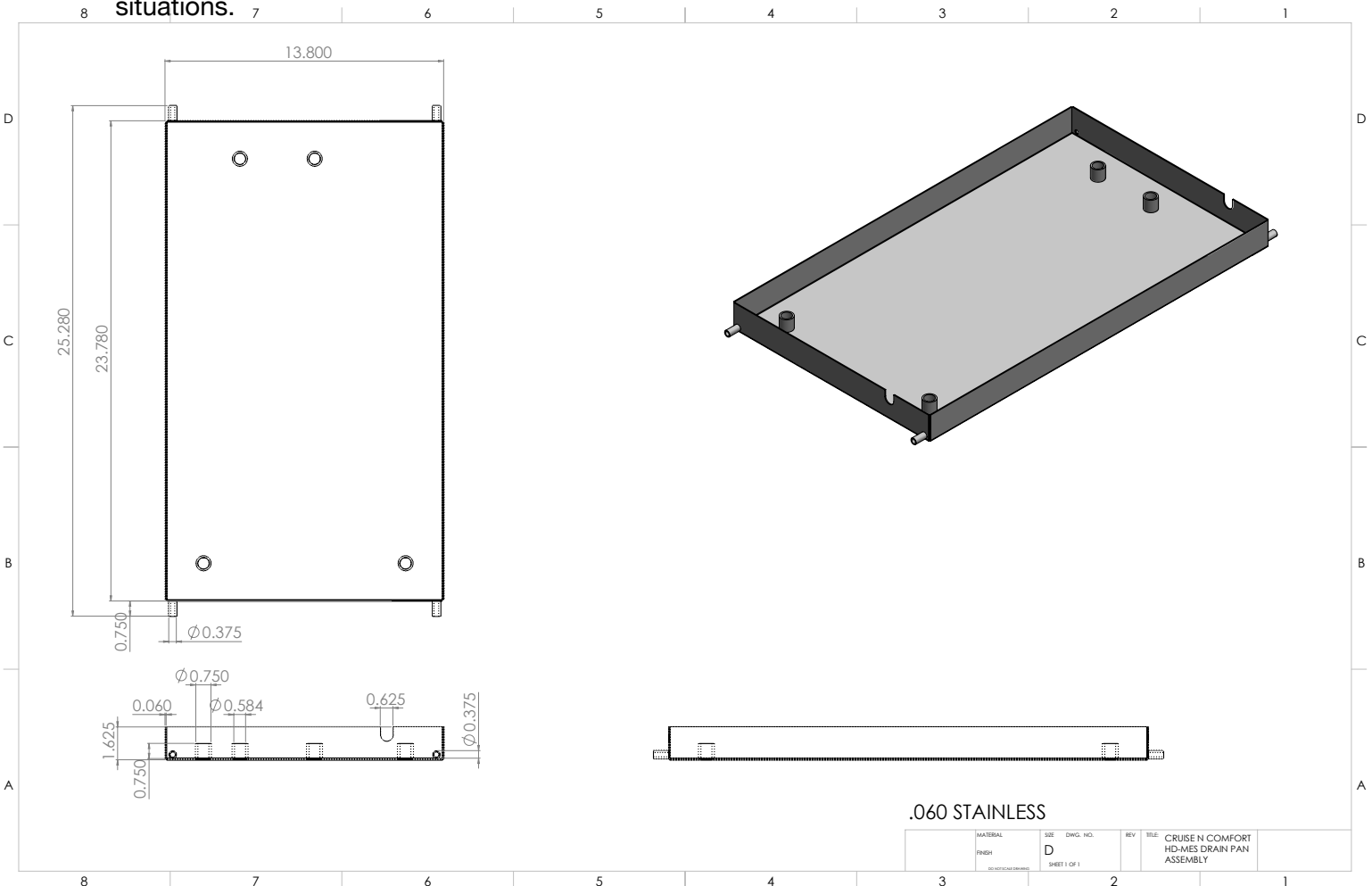




Our optional condensation tray is built from .060 Stainless Steel and is designed to collect all condensation from the HD or MES Series air conditioners. This drain tray is a great solution for very humid environments. The tray has four 3/8" drain tubes that are TIG welded on all four corners to allow drainage when the vehicle or boat is on an incline. The four middle metal stand-up tubes in the base of the tray allow the mounting bolts from the HD or MES baseplate to pass through- enabling easy installation. Please note that the HD/ MES has an internal condensation tray that is adequate in most cases. This larger tray gives more drain holes and a larger capacity for off-road or offshore situations.



CRUISE N COMFORT USA
 1020 West Ranch Road Suite 102 Tempe, AZ 85284
 Tel: 1(855)899-1442 Fax: 1(888)246-2832
 Email: info@CruiseNComfortUSA

Included with kit:

Qty. 1- Stainless Steel Extreme Condensation Tray

Qty. 6- Zip ties for securing drain tubes

Qty. 2- Drain tubes for directing internal MES / HD drain tray to larger tray

Qty. 1- 12 feet 3/8" ID poly tubing



Not Included :

Silicone glue (optional)

5/16" Grade 5 or grade mounting bolts, washers and nuts. Length would depend on the surface you are mounting the unit to.

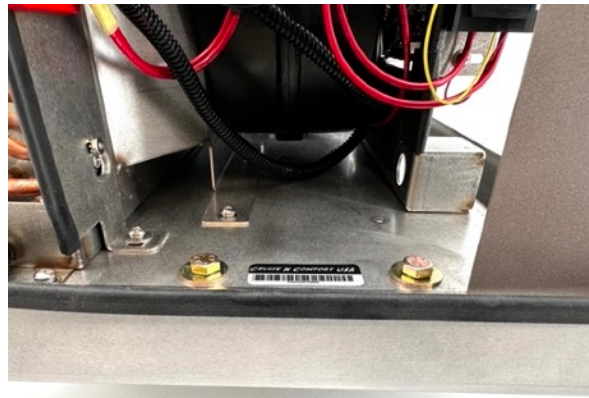


The HD or MES air conditioners sit in this tray and the 2 units are bolted together. Make sure the bolts recommended above pass through the unit, the condensation tray, and the surface you are mounting to. Remember, please secure these properly. They are very heavy. It may be necessary to add a layer of foam or soft rubber under the pan to reduce vibration.

Figure #1



Figure #2



The internal drain tray should either have the short drain tubes hooked up with the included flexible tubing and directed into the tray (Figure #3) or drained outside the vehicle (Figure 4). Longer 3/8" ID line would need to be purchased from a hardware store if using this configuration. Attach and run 4 drain tray hoses outside of vehicle. Secure all drain tubes with included zip ties. Applying a small film of silicone glue to the outside of tubes before attaching the hoses will increase the seal of the hoses. Do not run tubes from one side to the other or tie into each other with T's. Doing this may cause the tray to not drain properly depending on the angle of vehicle. Run drain tubes to outside vehicle.

Figure #3

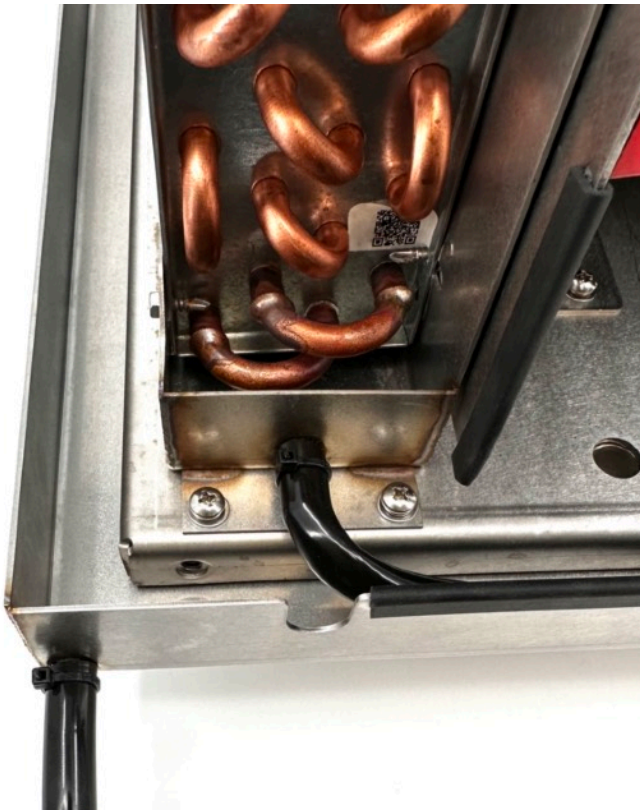


Figure #4

