



VES MAXX 48



VES MAXX 48 Shown with manual control

**TRUE DC !
VARIABLE SPEED TUNABLE
COMPRESSORS FOR CURRENT DRAW
AND CAPACITY!**

Introducing the VES Maxx 48 Volt - a pinnacle of air conditioning technology. At its core, the VES MAXX 48 boasts a substantial MAXX evaporator paired with an efficient large displacement 48-volt variable-speed compressor. With a focus on optimizing air distribution, the MAXX evaporator is equipped with six generous 4" vents, making it the ideal choice for cooling large spaces effectively. These evaporators not only deliver powerful performance but also prioritize energy efficiency through the integration of PWM Technology. Furthermore, they are engineered for quiet operation with four centrifugal low-noise blowers, and a high-capacity 600 CFM blower, ensuring a comfortable environment. To top it off, the efficient composite evaporator top mounting brackets simplify installation. Proudly designed and assembled in Arizona, the VES Maxx 48 Volt embodies a commitment to quality and innovation, offering unmatched cooling performance for your comfort and convenience. Experience excellence in air conditioning with VES Maxx 48 Volt, where technology meets reliability.

Features:

- 6 large 4" rotatable vents with powder coated fascia for quieter and direct able air flow
- Adjustable Compressor baseline for adjusting current consumption and BTU output
- Always active Eco Mode
- Included manual control with infinite variable speed Pulse Width Modulation blower control
- Thermostat ready for all of our optional thermostat options including wifi enabled

Specifications:

VES MAXX 48L

Voltage Range 40-62 VDC

Current Consumption 19-29 AMPS @ 48 Volts DC*

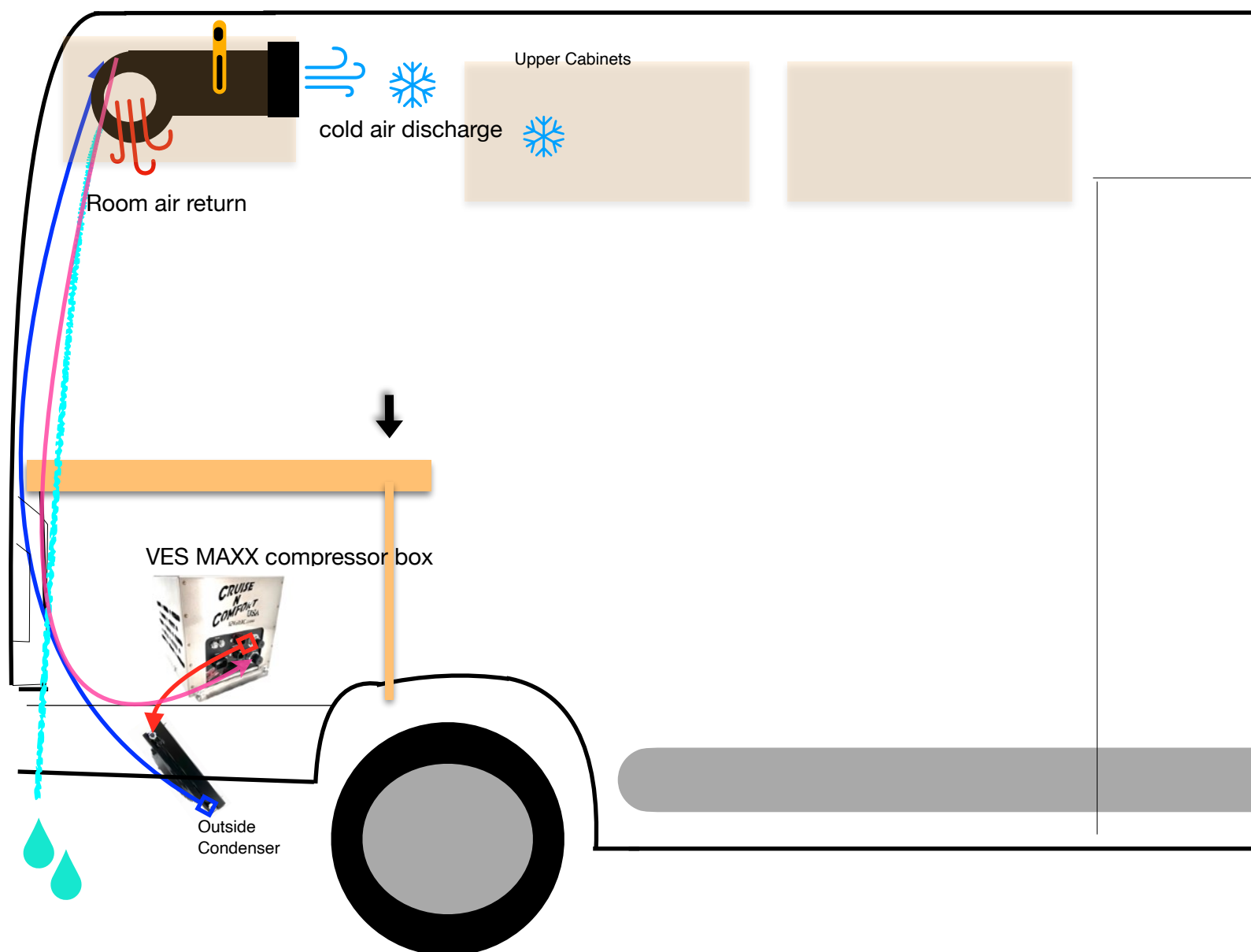
20k MAX BTU

*Current ratings are nominal. Current ratings can fluctuate depending on accessories and or operating conditions.



VES MAXX

This diagram shows a typical set up with the large MAXX Evaporator up high above the back doors in a van. The MAXX Evaporator is rated at a powerful 600 cfm so ducting is not necessary.



Condensation drain line 3/8" drains to outside

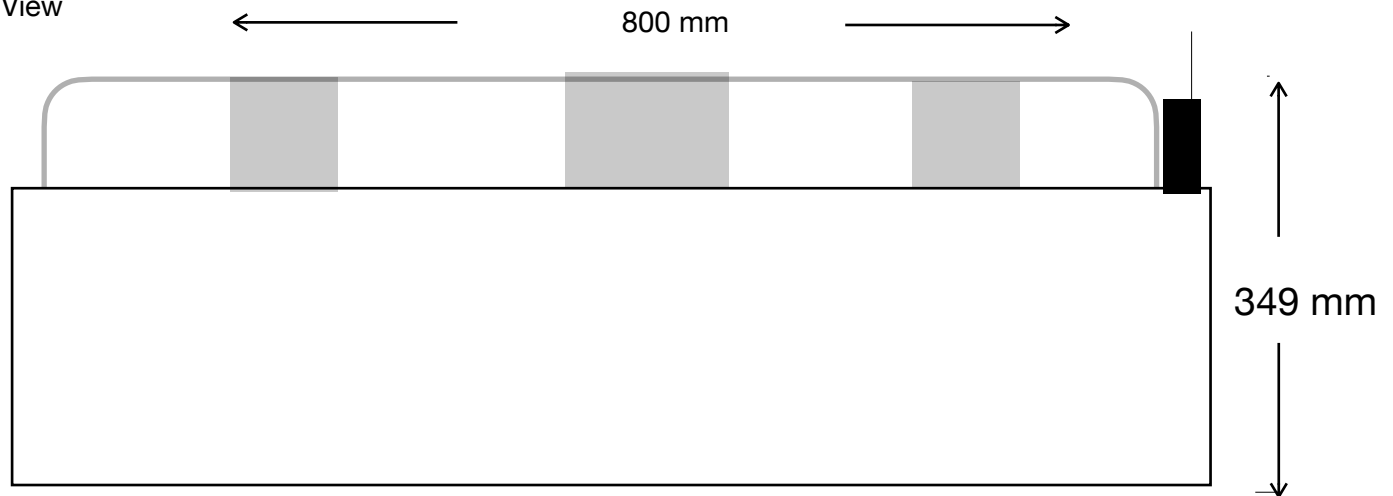
MAXX Evaporator Specifications

Weight: 21 lbs (includes mounting brackets)

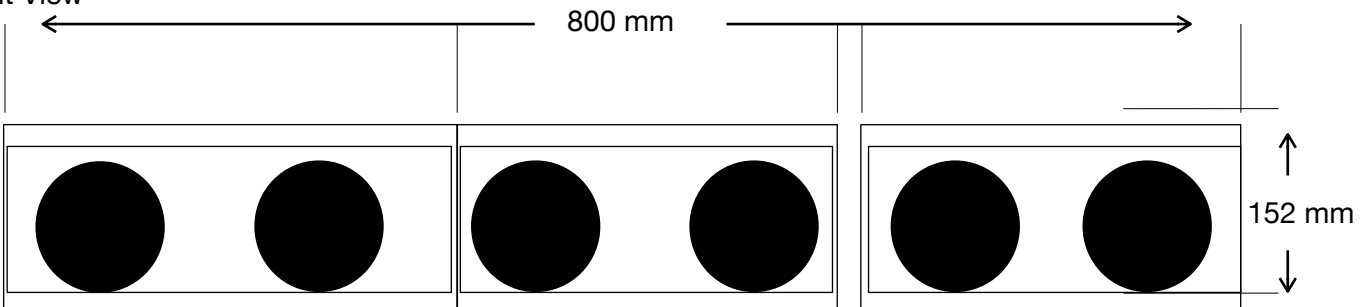
Maximum Air Volume 600 CFM



Top View



Front View



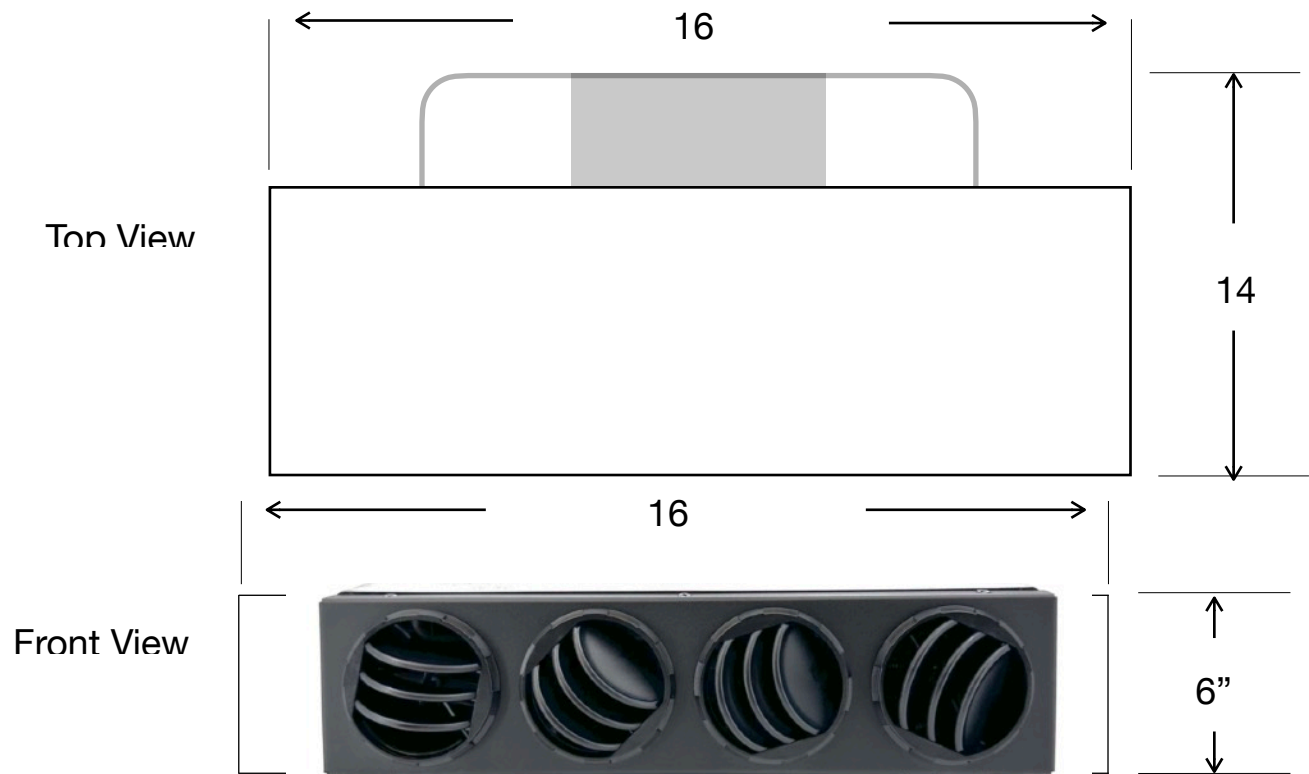
Optional Evaporator Configurations:

VES MAXX 48 ULTRA

Introducing the VES Maxx 48 Volt ULTRA - a game-changing solution in air conditioning technology. This remarkable product features two VES ULTRA evaporators that are at the forefront of efficiency and performance. With an efficient large displacement 48-volt variable-speed compressor, the ULTRA evaporators excel in cooling large spaces with ease. These units redefine air distribution by allowing for precise cooling in two different locations without the need for ducting, thanks to four 3" rotatable vents. Leveraging PWM Technology for optimal efficiency, the ULTRA evaporators are not only powerful but also energy-conscious. The incorporation of twin low-noise centrifugal blowers and composite evaporator top mounting brackets ensures quiet operation and easy installation. What's more, they are proudly designed and assembled in Arizona, reflecting our commitment to quality and innovation. Elevate your air conditioning experience with VES Maxx 48 Volt ULTRA, where cutting-edge technology meets performance excellence.



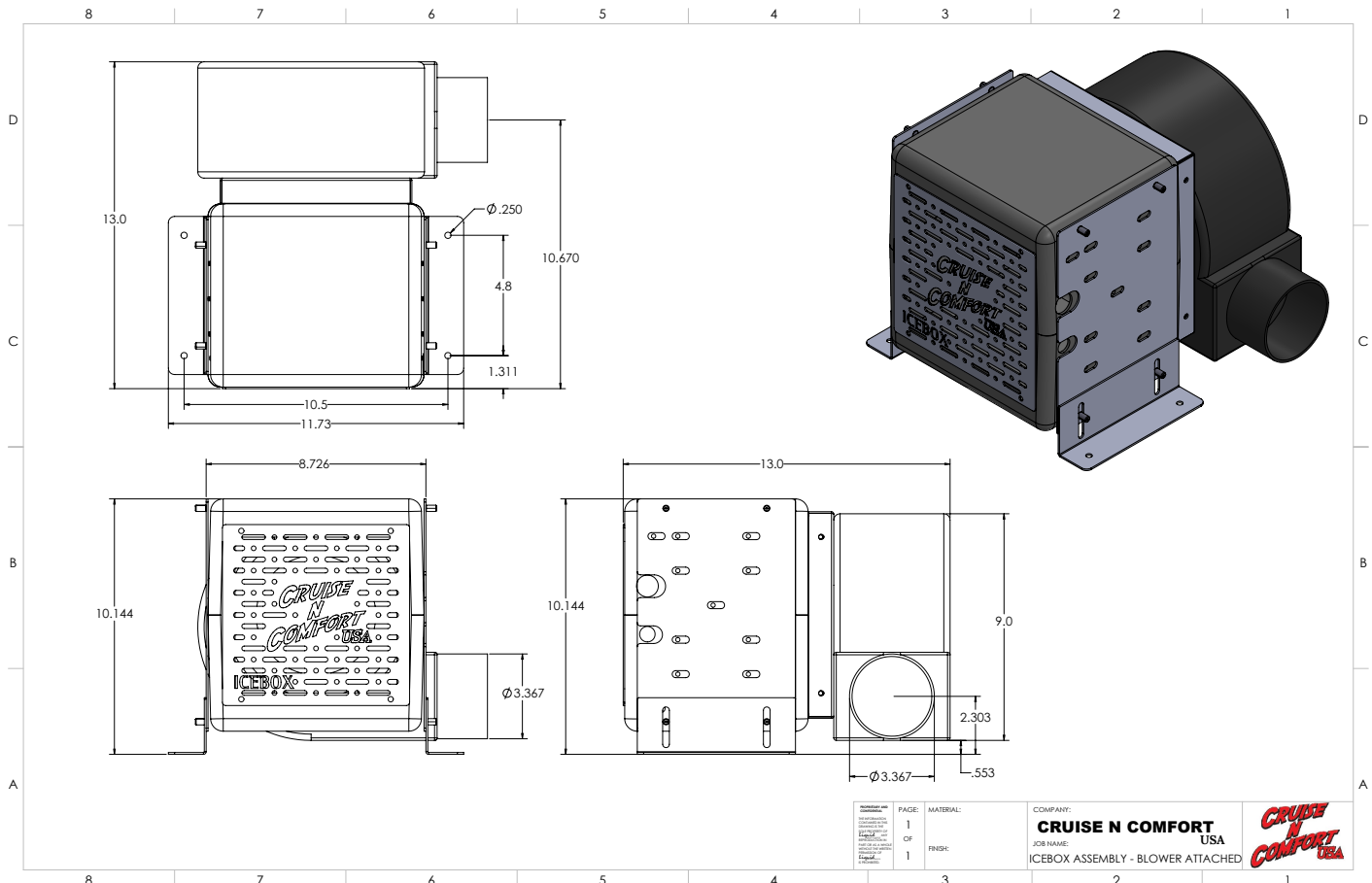
Ultra Evaporator



Weight 8.2 lbs.

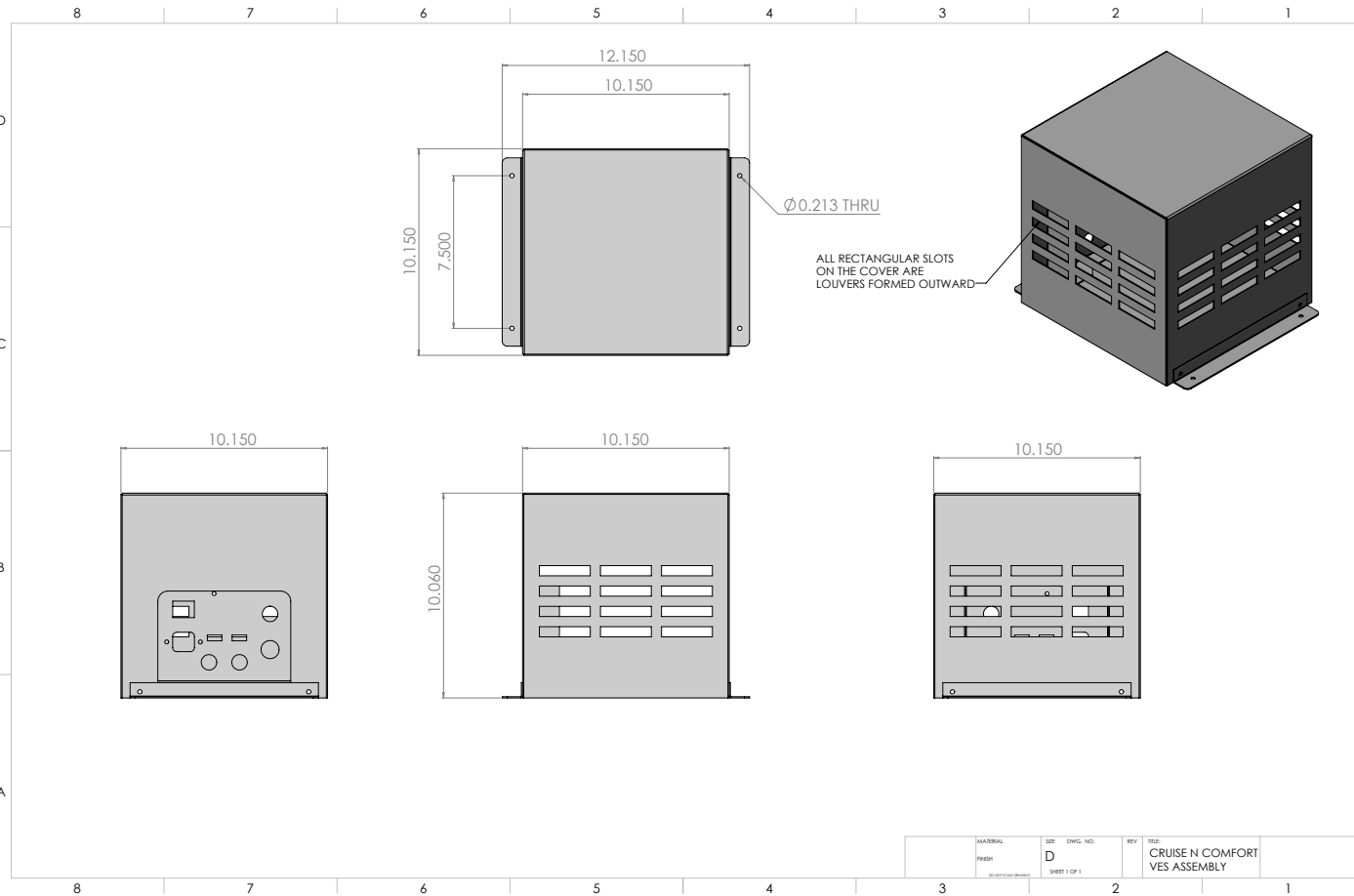
VES MAXX 48 ICEBOX

Introducing the VES Maxx 48 Volt ICEBOX - a groundbreaking innovation in air conditioning technology. This exceptional product showcases the power of two VES ICEBOX evaporators, complemented by an efficient large displacement 48-volt variable-speed compressor. The ICEBOX evaporators redefine air distribution, offering precise cooling in two separate locations through the use of 4" vents and custom ducting, making it the ideal choice for larger areas. These evaporators are not only powerful but also energy-conscious, thanks to the integration of PWM Technology. Moreover, they are IP68 rated for durability, ensuring reliable performance even in challenging conditions. With composite evaporator and top or bottom mounting brackets, installation is a breeze. Designed and assembled in Arizona, the VES Maxx 48 Volt ICEBOX represents a commitment to quality and innovation that sets it apart. Experience superior cooling efficiency with VES Maxx 48 Volt ICEBOX, where cutting-edge technology meets reliability and excellence.



Weight 18.1 lbs

Compressor Box Specifications VES
MAXX 48 Volts
Weight : 30.5 lbs
Stainless Steel Chassis and Enclosure



Weight 30.5 LBS

	MATERIAL	SIZE	DWG. NO.	REV	TITLE
	304 STAINLESS STEEL	D			CRUISE N COMFORT VES ASSEMBLY
			SHEET 1 OF 1		

Dual Fan Extreme Climate Condenser Specifications

Salt resistant powder coated aluminum construction. When using this condenser on MAXX units it cannot be wired in series. Maximum air flow is recommended for this condenser so parallel wiring is recommended.

11" IP68 performance fans

Weight:
Condenser, Fan Shroud, 2 fans 11.72 lbs

Rock Guard 2.11 lbs

Stainless Condenser Brackets 3.12 lbs

Extra Condenser Core 4.0 lbs.

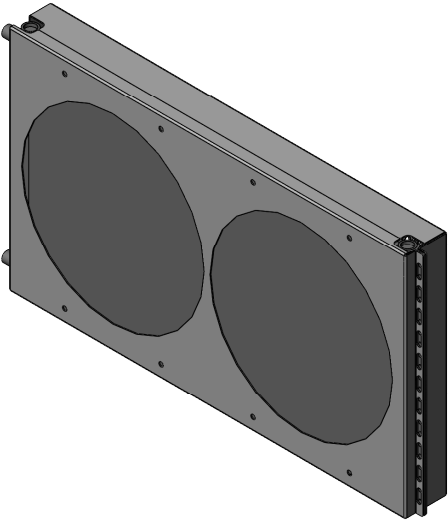
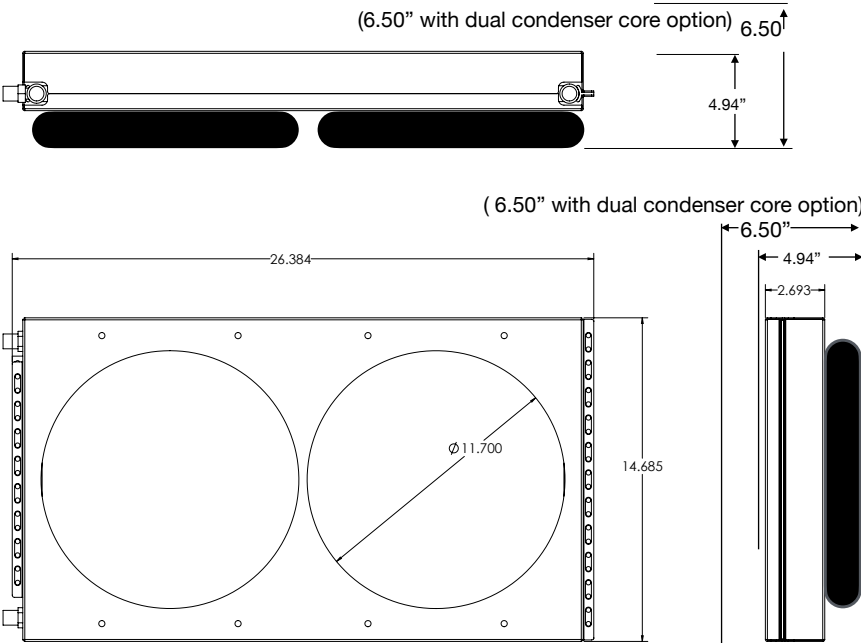
Dual Condenser core available for extreme climates. This can be just as effective as the XXL condenser and only adds 1.56" to the thickness of the condenser.



Optional Rock Guard Shown



Optional Rock Guard and Stainless Condenser Brackets Shown



Universal Condenser Mounting Brackets:

These mounting brackets are made of heavy Stainless Steel and include all stainless hardware. These brackets are universal and give you the ability to mount the condenser under, on top, or on the back of the vehicle. The brackets are completely adjustable.

Weight: 3.1 LBS

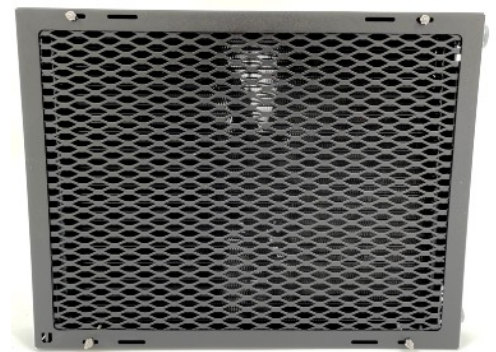


*optional rock guard shown



Condenser Rock Guard:

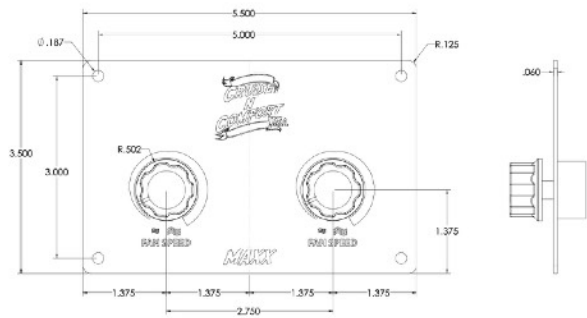
The CNC Rock Guard is designed to help protect our condensers from rocks and debris. This option is available for all of our condensers and come installed on the condenser when purchased at the time the condenser and main unit are ordered new. If you previously purchased a condenser from us it will fit, but we will need an email from you with the size of your condenser (single fan or dual fan). The unit is flat black powder-coated aluminum and resists salt and corrosion. Available for all of our condensers. Included on XXL condenser.



Control Options MAXX

Manual Control

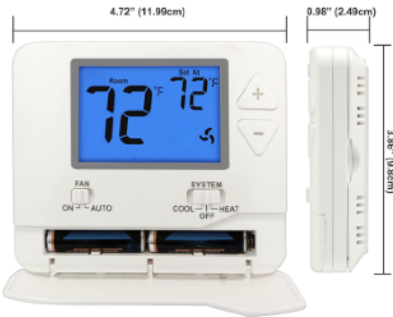
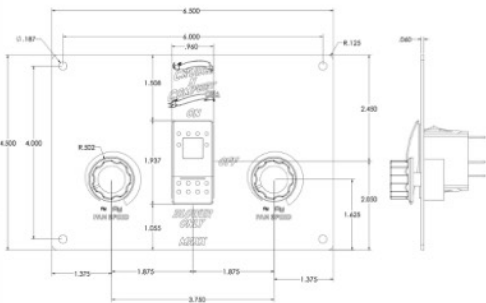
The Manual Control allows for on/ off / blower only control of our units. It can be panel mounted on the wall or dash of a vehicle. The panel also includes a potentiometer to control the PWM module blower speed controller.



Thermostat Options

DT-07 Thermostat:

The DT-07 is a basic digital thermostat that will turn the unit off at the temperature set point. Includes two PWM potentiometers with mounting plate for efficient blower control. Thermostat also has a heat function that can trigger a heating device (24 volt DC Relay required). Available Colors: White (-W) or Black (-B)



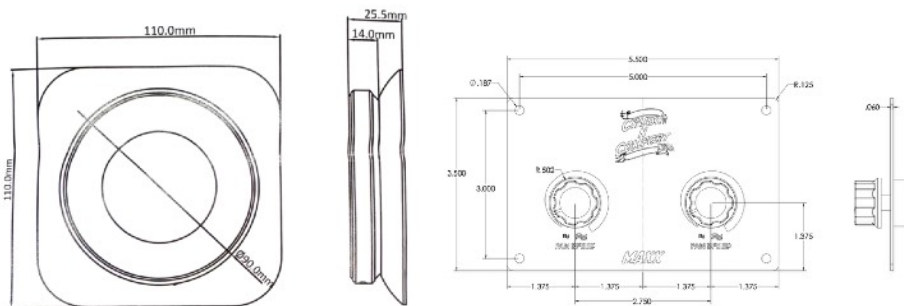
Unlike competitor's WiFi thermostats, which either require a cellular chip activated by a specific carrier or only offer direct WiFi connection to a cell phone like Bluetooth, our WiFi thermostats broadcast over the internet when connected to a 2.4 GHz network of your choice. These connections can be established through a cellular phone from almost any carrier, a tablet, a WiFi hotspot, or even Starlink satellite WiFi. You can leave the internet device in the vehicle, allowing the thermostat to maintain an internet connection. This enables you to connect to, view, and control your vehicle's temperature, and turn the unit on or off from anywhere using the app.

DT-04 WiFi App Enabled Thermostat:

Our new thermostat is app enabled with a customer supplied WiFi connection and is prewired for our systems. Includes two PWM potentiometer with mounting plate for efficient blower control. Thermostat also has a heat function that can trigger a heating device (24 volt DC Relay required). Available Colors: White (-W) or Black (-B)

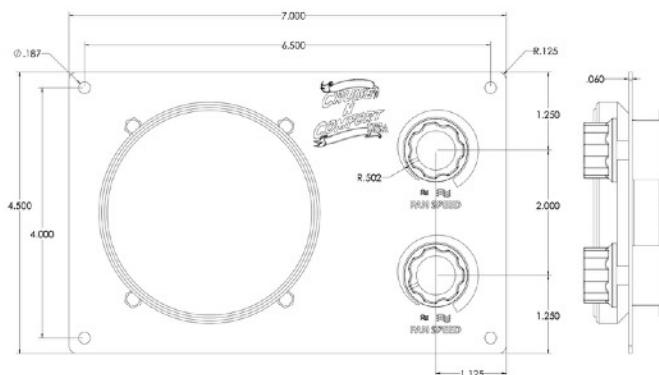


*Wifi app compatible with internet hot spots and routers that



Thermostat Mounting Plate for DT-04-TP:

The DT-04-TP is an easy solution for mounting our DT-04 thermostats. We machine these brackets, powder-coat them and assemble them with our DT-04 thermostat.
Available Colors: White (-W) or Black (-B)



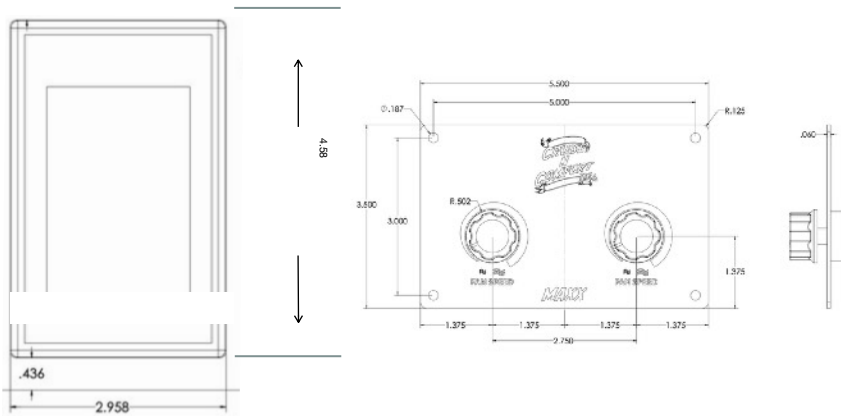
DT-05 WiFi App Enabled Thermostat:

Our new thermostat is app enabled with a customer supplied WiFi connection and is prewired for our systems. Includes two PWM potentiometers with mounting plate for efficient blower control. Thermostat also has a heat function that can trigger a heating device (24 volt DC Relay required).

Available Colors: White (-W) or Black (-B)



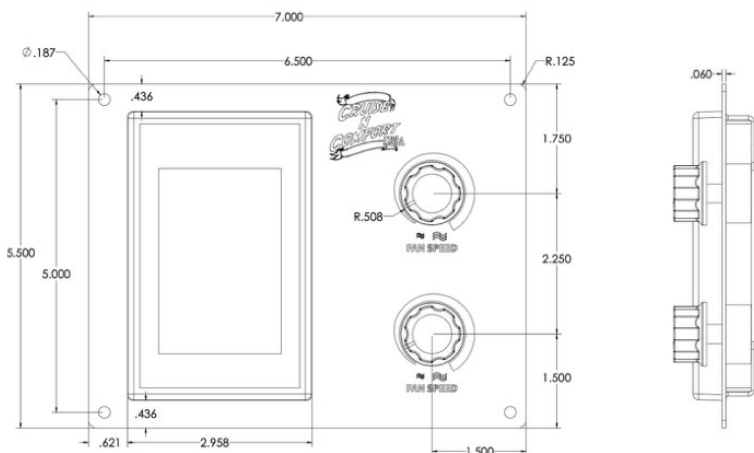
*Wifi app compatible with internet hot spots and routers that can



Thermostat Mounting Plate for DT-05-TP:

The DT-05-TP is an easy solution for mounting our DT-05 thermostats. We machine these brackets, powder-coat them and assemble them with our DT-05 thermostat.

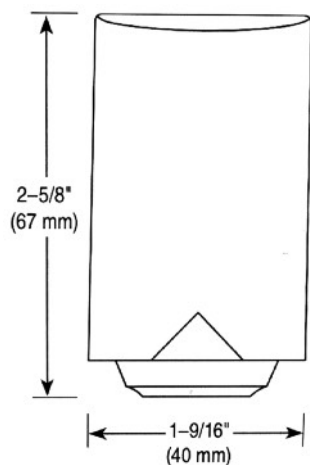
Available Colors: White (-W) or Black (-B)



Optional Sensors for DT-05:

DT-OS Outdoor wired temperature sensor displays the actual outside temperature to the DT-05 thermostat. *

Cruise N Comfort sticker can be removed

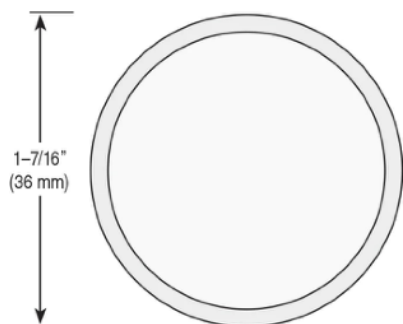


DT-IS Remote wired flush mount indoor sensor allows for temperature sensing in areas away from thermostat. The thermostat can then be set to take readings from the thermostat sensor, remote sensor or average between both.

*Cruise N Comfort sticker can be removed



Front View



Side View

